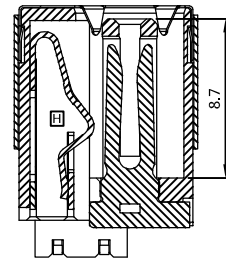
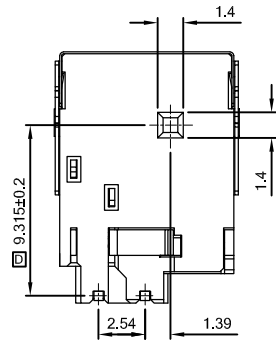
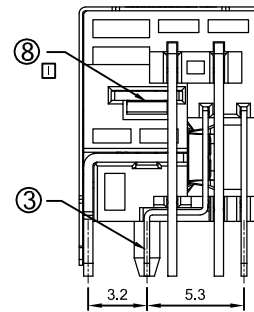
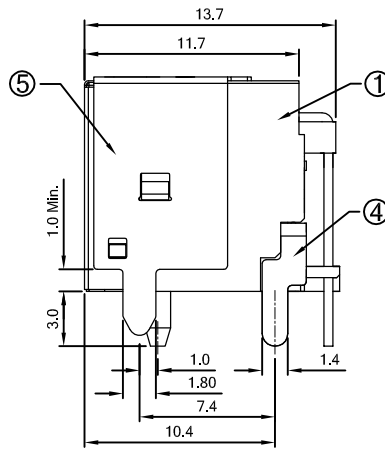
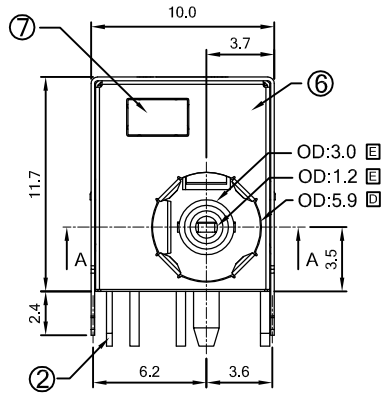
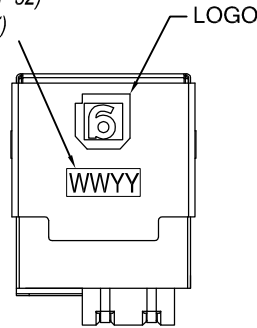


PROPRIETARY INFORMATION
COMPANY CONFIDENTIAL



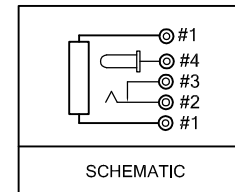
SECTION A-A

Date Code (OPTION)
WW:WEEK(01~52)
YY:YEAR(10~)



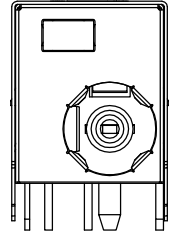
TOP VIEW

GREEN
5+ — (LED symbol) — 6

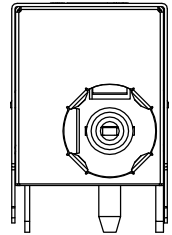


SCHEMATIC

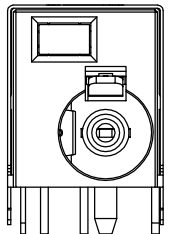
GTi10-30003-01
GTi10-30003-02
GTi10-30003-03
GTi10-30003-04



GTi10-30003-05
GTi10-30003-08



GTi10-30003-06
GTi10-30003-07



SPECIFICATION

- 1. VOLTAGE RATING: 24V & 5A
- 2. CONTACT RESISTANCE: 30 mΩ(MAX.)
- 3. INSULATION RESISTANCE: 100MΩ MIN. @ DC250V
- 4. OPERATION TEMPERATURE: -25°C~90°C
- 5. WITHSTAND VOLTAGE: 500VAC
- 6. INSERTION FORCE: 3.0kgf (MAX.)
- 7. EXTRACTION FORCE: 0.3kgf (MIN.)
- 8. LIFE TESTING: 5,000 CYCLES
- 9. SOLDERING PROCESS: PARTS WILL WITHSTAND 260°C/5Sec.
- 10. EIAJ RC-5320A COMPLIANT.
- 11. LED WAVELENGTH: 570±5 nm
- 12. RoHS 6/6 COMPLIANT.

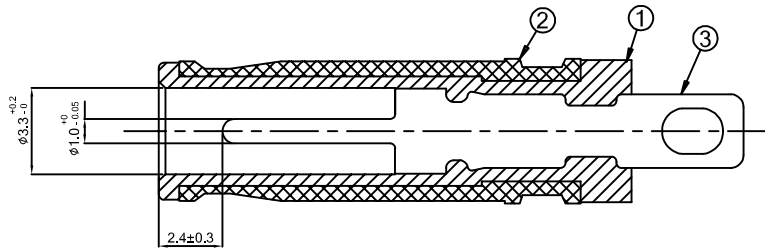
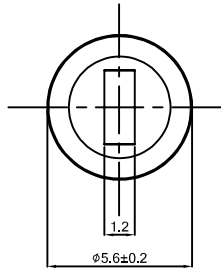
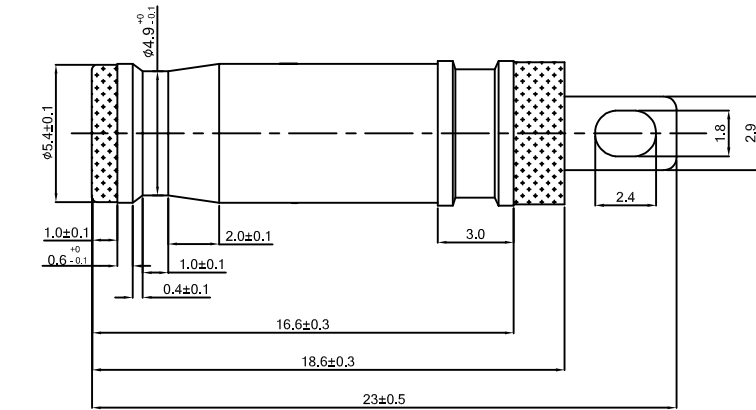
8	TERMINAL #5	1	SUS, T=0.5mm		
7	LED	1		GREEN	LED WAVELENGTH: 570±5 nm
6	FACE SHIELDING COVER	1	SUS, T=0.1mm	SEE ORDER INFORMATION	
5	CONTACT FOOT#1	1	BRASS, T=0.2mm	Tin 120u" MIN. OVER Ni 30u" MIN.	
4	TERMINAL #4	1	PHOSPHOR BRONZE T=0.5mm	Tin 120u" MIN. OVER Ni 30u" MIN.	
3	TERMINAL #3	1	BRASS, T=0.3mm	SEE ORDER INFORMATION	
2	TERMINAL #2	1	PHOSPHOR BRONZE T=0.3mm	SEE ORDER INFORMATION	
1	HOUSING	1	SEE ORDER INFORMATION, UL94V-0	BLACK	
ITEM	NAME	QTY	MATERIAL	PLATING & COLOR	NOTE

GENERAL TOLERANCE .X.±0.5 .X±0.3 .XX±0.2 .XXX±	ANGLE TOLERANCE X°±2° .X°±1° .XX°± .XXX°±	DRAWN TERRY 06/27/16'	DATE 06/27/16'	
MATL SEE BOM	FINISH SEE NOTES	CHECKED TERRY 06/27/16'	DATE 06/27/16'	
SCALE N/A	UNIT mm	APPROVED DANIEL 06/27/16'	DATE 06/27/16'	PART NUMBER GTi10-30003-XX
SHEET 1 OF 2				DRAWING NO. GTi10-30003
				SIZE A4
				REV. K7

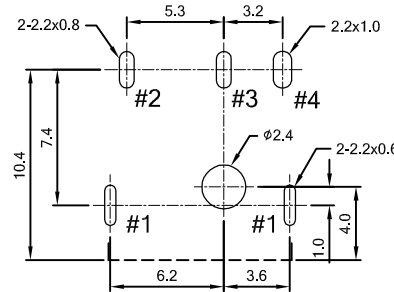
J ORDER INFORMATION

K4

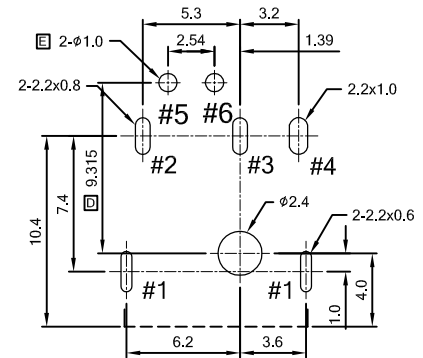
PART NUMBER	TERMINAL #2 AND #3	FACE SHIELDING COVER	LED	HOUSING	DATE CODE
GT110-30003-01	TIN 120u" MIN. OVER NICKEL 30u" MIN.	NICKEL 30u" MIN.	GREEN	PA9T K7	YES
GT110-30003-02	AG 30u" MIN. OVER NICKEL 30u" MIN.	NICKEL 30u" MIN.	GREEN	PA9T K7	YES
GT110-30003-03	TIN 120u" MIN. OVER NICKEL 30u" MIN.	BLACK COLOR OVER NICKEL 30u" MIN.	GREEN	PA9T	YES
GT110-30003-04	AG 30u" MIN. OVER NICKEL 30u" MIN.	BLACK COLOR OVER NICKEL 30u" MIN.	GREEN	PA9T	YES
K1 GT110-30003-05	TIN 120u" MIN. OVER NICKEL 30u" MIN.	NICKEL 30u" MIN.	NONE	PA9T K7	YES
K2 GT110-30003-06	TIN 120u" MIN. OVER NICKEL 30u" MIN.	NONE	GREEN	PA9T K7	YES
K3 GT110-30003-07	TIN 120u" MIN. OVER NICKEL 30u" MIN.	NONE	GREEN	PA9T K7	NONE
K3 GT110-30003-08	TIN 120u" MIN. OVER NICKEL 30u" MIN.	BLACK COLOR OVER NICKEL 30u" MIN.	NONE	PA9T	YES



K RECOMMENDED PLUG



K W/O LED Connector Recommend PCB Layout
Jack Top View
Tolerance: ±0.05mm
Recommend PCB Thickness 1.6mm



K3 With LED Connector Recommend PCB Layout
Jack Top View
Tolerance: ±0.05mm
Recommend PCB Thickness 1.6mm

REV.	ECN. NO.	DESCRIPTION	ENG	DATE
A		ISSUED	RON	6/23/09'
B		MOVED LED LOCATION, OVERALL HEIGHT CHANGE	RON	1/29/10'
C		ADD LOGO AND DATE CODE	AXL	2/8/10'
D		CORRECT PCB LAYOUT WAS 8.115 AND REMOVE COVER AND TWO DIMENSIONS	AXL	2/23/10'
E		MODIFY DRAWING	TERRY	2/27/10'
F		ADD PIN OUT ON PCB LAYOUT	AXL	3/8/10'
G		ADD RECOMMENDED PLUG ON SHEET 2	AXL	3/9/10'
H		MODIFY DESIGN	TERRY	4/13/10'
I		ADD TERMINAL #5	TERRY	5/25/10'
J		MODIFY SHIELD COLOR AND ORDER INFORMATION	TERRY	8/26/10'
K		MODIFY SPEC. 1 FROM 12V TO 24V	AXL	9/27/10'
K1		ADD -05 WITHOUT LED OPTION	AXL	10/7/10'
K2		ADD -06 OPTION	AXL	4/8/11'
K3		ADD -07 OPTION	AXL	4/11/11'
K4		CHANGE MATERIAL ON -01, -02, -05 WAS PA9T	AXL	4/11/11'
K5		ADD -08 OPTION	TERRY	8/15/11'
K6		MODIFY OPERATION TEMPERATURE	TERRY	9/28/11'
K7		ADD LED WAVELENGTH AND CHANGE HOUSING MATERIAL	TERRY	6/27/16'

**PROPRIETARY INFORMATION
COMPANY CONFIDENTIAL**

NOTES

1. DIELECTRIC STRENGTH: AC 500V AT 1 MINUTE
2. INSULATION RESISTANCE: DC 500V/100M OHMS MIN.
3. RATED VOLTAGE: 20v dc.
4. RATED CURRENT: 8 AMPS.

ITEM	MATERIAL	Q'TY	THICKNESS	PLATING	NOTE
3	BRASS		2um MIN	NICKEL	
2	BRASS		2um MIN	NICKEL	
1	PBT			BLACK	

GENERAL TOLERANCE >40 ±0.5 18~40 ±0.4 6~18 ±0.3 1~6 ±0.2 0~1 ±0.1	ANGLE TOLERANCE X°± .X°± .XX°± 1~6 ±0.2 .XXX°±	DRAWN TERRY	DATE 06/27/16'	
MATL SEE BOM	DESIGN TERRY	DATE 06/27/16'	TITLE DC POWER JACK WITH LED	
FINISH SEE NOTES	CHECKED TERRY	DATE 06/27/16'	PART NUMBER GT110-30003-XX	
SCALE N/A	UNIT mm	APPROVED DANIEL	DATE 06/27/16'	DRAWING NO. GT110-30003
SHEET 1 OF 1				SIZE A4 REV. K7