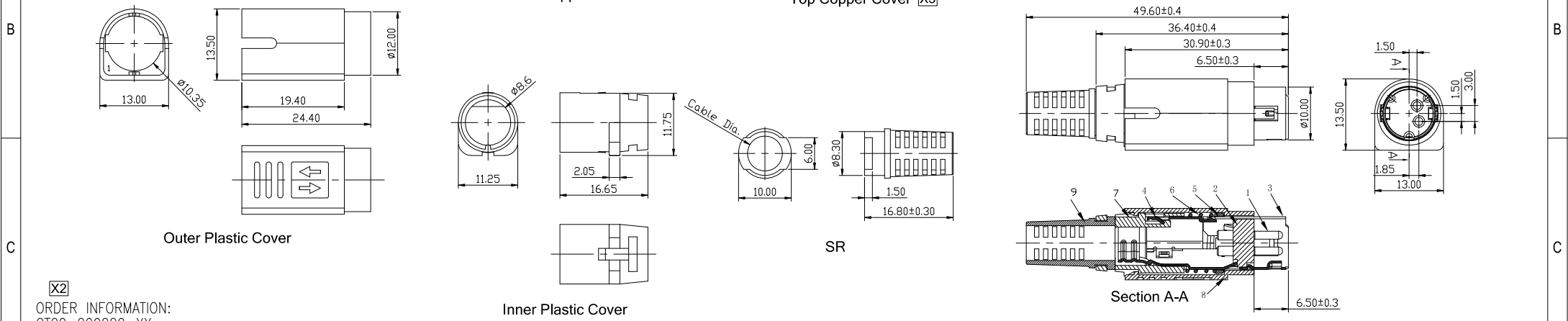


REV.	ECN. NO.	DESCRIPTION	ENG	DATE
X1		INITIAL	Jeff	07/16/13'
X2		CHANGE ORDER INFORMATION	AXL	07/13/21'
X3		UPDATE NOTE	Joy	09/28/21'
X4		ADD NEW SPECIFICATION	Jerry	07/05/22'
X5		UPDATED DWG	Jerry	05/31/23'



X2
ORDER INFORMATION:
GT20-200220-XX

XX	CABLE OD	COLOR
01	4.0mm	BLACK
02	4.4mm	BLACK
03	5.0mm	BLACK
04	5.5mm	BLACK
05	6.0mm	BLACK
06	6.5mm	BLACK
07	4.0mm	PANTONE COOL GRAY 1C
08	4.4mm	PANTONE COOL GRAY 1C
09	5.0mm	PANTONE COOL GRAY 1C
10	5.5mm	PANTONE COOL GRAY 1C
11	6.0mm	PANTONE COOL GRAY 1C
12	6.5mm	PANTONE COOL GRAY 1C
X4 13	WITHOUT SR	PANTONE COOL GRAY 1C

- NOTES:
- RATING: PIN 1&2: DC20V, 7.5A MAX.
 - CONTACT RESISTANCE: 30mΩ MAX.
 - INSULATION RESISTANCE: 250V DC, 50MΩ MIN.
 - DIELECTRIC WITHSTANDING VOLTAGE: 250V AC, 1 MINUTE
 - APPLIED CABLE SIZE:
PIN 1&2: AWG #16 MAX.
 - MECHANICAL:
 - INSERTION FORCE: 4.5kgf MAX.
WITHDRAWAL FORCE: 0.9kgf MIN.
 - DURABILITY: 5000 CYCLES
 - RoHS 6/6 COMPLIANT

9	SR	1		PVC	COLOR SEE ORDER INFORMATION	UL 94V-0
8	COVER	1		PA66+25%G.F.	COLOR SEE ORDER INFORMATION	UL 94V-0
7	INNER	1		PC	COLOR SEE ORDER INFORMATION	UL 94V-0
6	SPRING	1		PIANO WIRE	X3 ZINC 30u" MIN. PLATING, 纒黑.	UL 94V-0
5	PLASTIC RING	1		POM	X3 COLOR BLACK	UL 94V-0
4	TOP COPPER COVER	1		BRASS	NICKEL 50u" MIN. PLATING	
3	BOT COPPER COVER	1		BRASS	NICKEL 50u" MIN. PLATING	
2	PLASTIC BRACKET	1		PBT+30%G.F.	X3 COLOR BLACK	UL 94V-0
1	PIN	2		ø1.5X12.4L, BRASS	SILVER 30u" MIN. PLATING OVER NICKEL 30u" MIN. PLATING	
ITEM	NAME	Q'TY	DESCRIPTION	MATERIAL	FINISH / COLOR	NOTE

GENERAL TOLERANCE	ANGLE TOLERANCE	DRAWN	DATE	
X.±0.50 X5 .X±0.38 .XX±0.25 .XXX±0.15	X°± .X°± .XX°± .XXX°±	Jerry	05/31/23'	
MATL SEE BOM	CHECKED	DATE	PART NUMBER:	GT20-200220-XX
FINISH SEE NOTES	APPROVED	DATE	DRAWING NO.:	GT20-200220
SCALE N/A	UNIT mm			SIZE A4 REV. X5
SHEET 1 OF 1				