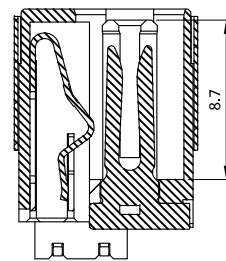
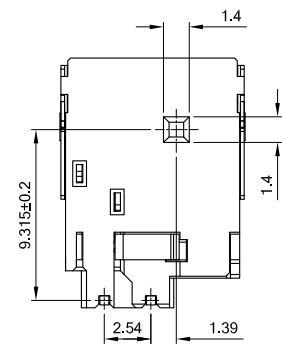


SPECIFICATION

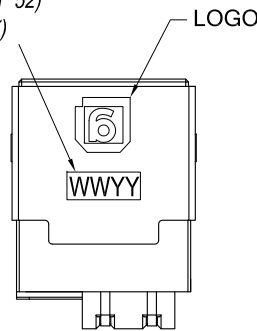
1. VOLTAGE RATING: 24V & 5A
2. CONTACT RESISTANCE: 30 mΩ(MAX.)
3. INSULATION RESISTANCE: 100MΩ MIN. @ DC250V
4. OPERATION TEMPERATURE: -25°C~90°C
5. WITHSTAND VOLTAGE: 500VAC
6. INSERTION FORCE: 3.0kgf (MAX.)
7. EXTRACTION FORCE: 0.3kgf (MIN.)
8. LIFE TESTING: 5,000 CYCLES
9. SOLDERING PROCESS: PARTS WILL WITHSTAND 260°C/5Sec.
10. EIAJ RC-5320A COMPLIANT.
11. LED WAVELENGTH: 570±5 nm
12. RoHS 6/6 COMPLIANT.

P/N	X	Y
DCJR-4501	2.0	2.0
DCJR-4601	2.4	3.0

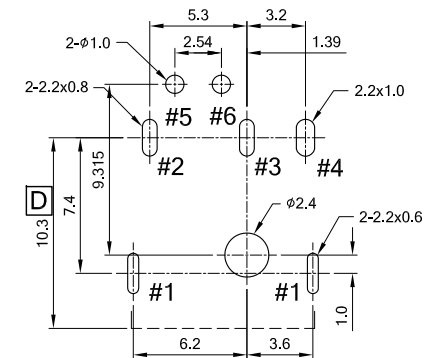
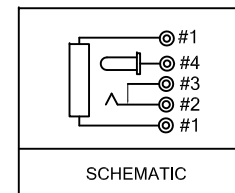


SECTION A-A

Date Code (OPTION)
 WW:WEEK(01~52)
 YY:YEAR(10~)



TOP VIEW



With LED Connector Recommend PCB Layout
 Jack Top View
 Tolerance: ±0.05mm

**PROPRIETARY INFORMATION
 COMPANY CONFIDENTIAL**

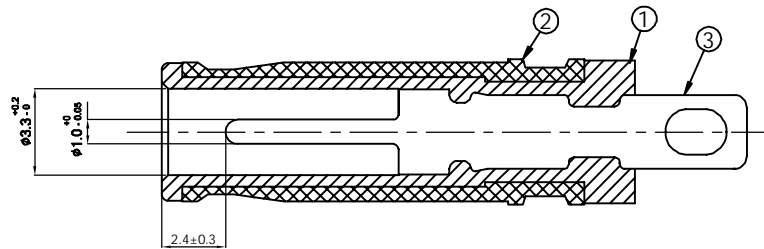
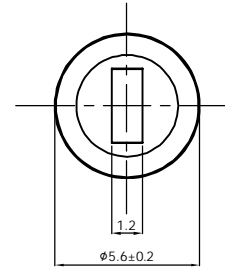
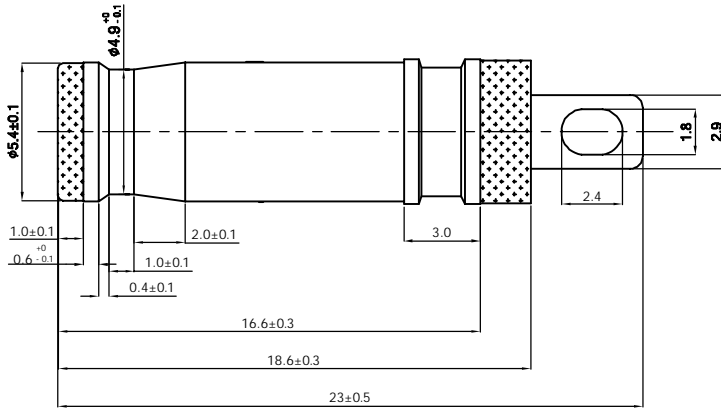
ITEM	NAME	QTY	MATERIAL	PLATING & COLOR	NOTE
7	TERMINAL #5	1	SUS, T=0.5mm		
6	LED	1		GREEN	
5	CONTACT FOOT#1	1	BRASS, T=0.2mm	Tin 100u" MIN. OVER Ni 30u" MIN.	
4	TERMINAL #4	1	PHOSPHOR BRONZE T=0.5mm	Tin 100u" MIN. OVER Ni 30u" MIN.	
3	TERMINAL #3	1	BRASS, T=0.3mm	Tin 100u" MIN. OVER Ni 30u" MIN.	
2	TERMINAL #2	1	PHOSPHOR BRONZE T=0.3mm	Tin 100u" MIN. OVER Ni 30u" MIN.	
1	HOUSING	1	SEE ORDER INFORMATION, UL94V-0	BLACK	

GENERAL TOLERANCE	ANGLE TOLERANCE	DRAWN	DATE	
X,±0.5 .X±0.3 .XX±0.2 .XXX±	X°±2° .X°±1° .XX°± .XXX°±	TERRY	07/25'16	
MATERIAL SEE BOM		CHECKED	DATE	TITLE, DC POWER JACK WITH LED
FINISH SEE NOTES		TERRY	07/25'16	
SCALE N/A	UNIT mm	APPROVED	DATE	PART NUMBER, DCJR-4X01-FK22X01
SHEET 1 OF 2		DANIEL	07/25'16	

ITEM	NAME	QTY	MATERIAL	PLATING & COLOR	NOTE
3					
4					
5					
6					
7					
8					

REV.	ECN. NO.	DESCRIPTION	ENG	DATE
A		ISSUED	DANIEL	03/10/14
B		MODIFY DRAWING	DANIEL	03/14/14
C		ADD DIMENSION & LED WAVELENGTH	TERRY	07/21/16
D		REVISE PCB LAYOUT DIM.	DANIEL	07/25/16
E		ADD PIN OPTION	TERRY	03/29/17

ITEM	MATERIAL	Q'TY	THICKNESS	PLATING
3	BRASS		2um MIN	NICKEL
2	BRASS		2um MIN	NICKEL
1	PBT			BLACK



RECOMMENDED PLUG

NOTES

1. DIELECTRIC STRENGTH: AC 500V AT 1 MINUTE
2. INSULATION RESISTANCE: DC 500V/100M OHMS MIN.
3. RATED VOLTAGE: 20v dc.
4. RATED CURRENT: 5 AMPS.

B PART. NUMBER

DCJR- XX 01 - F K 2 2 X 01

① ② ③ ④ ⑤ ⑥ ⑦

1. CONNECTOR:

DCJR-45: DC POWER JACK, PCB Thickness 1.2mm

DCJR-46: DC POWER JACK, PCB Thickness 1.6mm

2. POSITIONS

01: 01 POSITION

3. INSULATOR MATERIAL

F: NY9T

4. INSULATOR COLOR

K: BLACK

5. CONTACT PLATING

2: PLATING TIN

6. SHIELD PLATING

2: PLATING TIN

E 7. PACKING

T: TRAY(300*210mm)

1: TRAY(300*200mm)

PROPRIETARY INFORMATION
COMPANY CONFIDENTIAL

PART NUMBER.	DCJR-4X01-FK22X01	SHEET	REVISION
DRAWING NO.	GT23-250166	2 OF 2	SEE SHEET 1