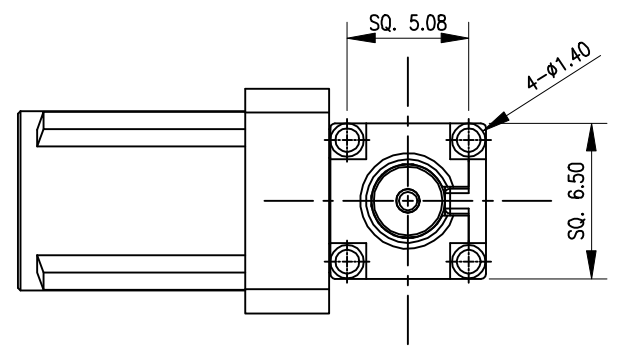
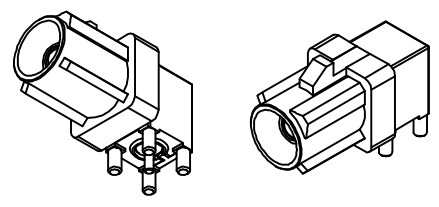
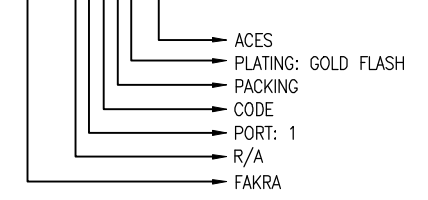


- 1.ELECTRICAL PERFORMANCE:
- 1.1 IMPEDANCE: 50Ω
 - 1.2 FREQUENCY RANGE: DC ~ 4 GHz
 - 1.3 WORKING VOLTAGE: 335 Vrms Max.
 - 1.4 DIELECTRIC WITHSTANDING VOLTAGE: 750V AC IN 1-MINUTE.
 - 1.5 CONTACT RESISTANCE: 5mΩ MAX.
 - 1.6 INSULATOR RESISTANCE: 1000MΩ MIN.
 - 1.7 INSULATOR RETENTION FORCE=10lb MIN.

- 2.MECHANICAL:
- 2.1 DURABILITY(MATING): 25CYCLE MIN.

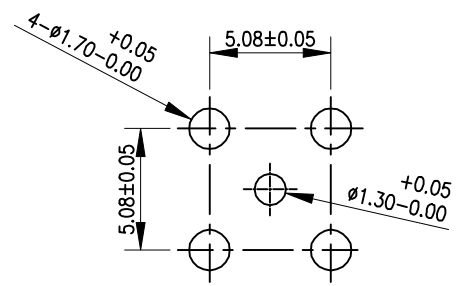
3.THESE PRODUCTS MUST MEET Rohs REQUIREMENT.

92801-B1XX2-CA1



CODE	CODE REFERENCE CHART	CODE
A	Black 9005	Violet 4003
B	Cream white 9001	Beige 1001
C	Blue 5005	Curry 1027
D	Bordeaux 4004	Carmine red 3002
E	Green 6002	Pastel orange 2003
F	Brown 8011	Pastel green 6019
G	Grey 7031	Water blue 5021

CONTACT	BRASS	GOLD
COVER	ZINC	NICKEL
INSULATOR	PTFE	NATURAL
INSULATOR	PTFE	NATURAL
BODY	ZINC	NICKEL
HOUSING	PA9T GN2330-1	BY CODE COLOR
DESCRIPTION	MATERIAL	FINISHED



RECOMMENDED PCB HOLE

AO	NEW RELEASED	---	Enid	Yang	2022/07/14
REV.	DEPICTION	ECN NO.	NAME	CHECK	DATE

REVISIONS					
2019.09.02_REV.13	B	C	D	E	F

QUALITY SYMBOLS MAJOR Ⓢ CRITICAL Ⓢ	DRAWN BY Enid	DATE 22/07/14	
	CHECKED BY Yang	DATE 22/07/14	
GENERAL TOLERANCES (UNLESS SPECIFIED) X ±0.5 .X ±0.25 .XX ±0.15 .XXX ±0.1 ANGLES ±2°	APPROVED BY Yang	DATE 22/07/14	TITLE FAKRA SMB R/A MALE PCB RECEPTACLE (ZINC)
UNITS mm		SIZE A4	RFQ NO. -
SCALE NONE	SHEET NO. 1 OF 1	REV A0	DWG NO. C-92801-B1XX2-CA1