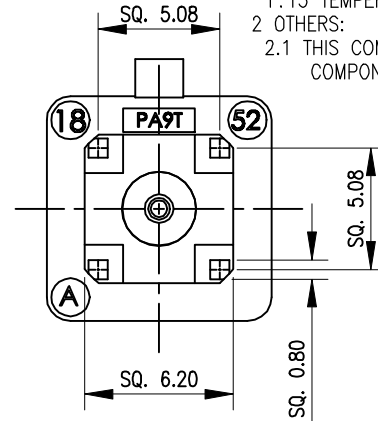
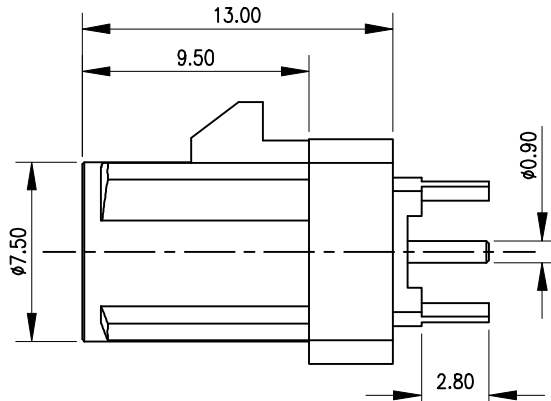
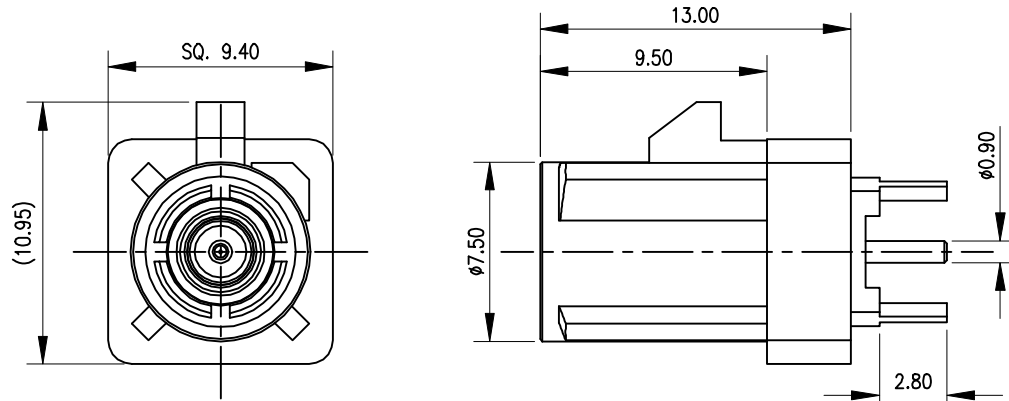
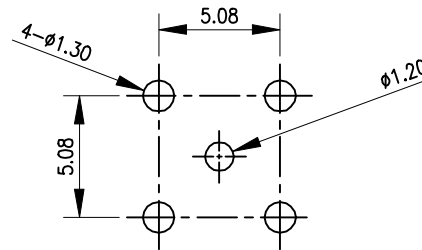
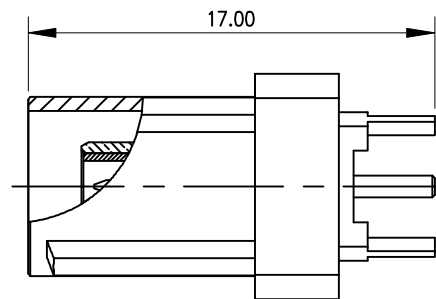


- 1.ELECTRICAL PERFORMANCE :
- 1.1 IMPEDANCE : 50 Ω
  - 1.2 FREQUENCY RANGE : 0~ 4 GHz
  - 1.3 WORKING VOLTAGE : ≤ 60 V D.C.
  - 1.4 DIELECTRIC WITHSTANDING VOLTAGE : 500 V AC IN 1-MINUTE
  - 1.5 INSULATION RESISTANCE : ≥ 1,000 MΩ BEFORE, AND ≥ 500 MΩ AFTER STRAIN
  - 1.6 CENTRE CONTACT RESISTANCE : ≤ 5 MΩ BEFORE, AND ≤ 40 MΩ AFTER 25 MATINGS
  - 1.7 OUTER TERMINAL RESISTANCE : ≤ 5 MΩ BEFORE, AND ≤ 40 MΩ AFTER 25 MATINGS
  - 1.8 WORKING CURRENT : ≤ 1 A D.C.
  - 1.9 CONNECTION INSERTION FORCE : ≤ 25 N
  - 1.10 CONNECTION EXTRACTION FORCE : ≤ 25 N
  - 1.11 LOCKING DEVICE STRENGTH : ≥ 80 N
  - 1.12 MATING CYCLES : 25 CYCLES MINIMUM
  - 1.13 TEMPERATURE RANGE : -40 °C TO +105 °C.



- 2 OTHERS:
- 2.1 THIS COMPONENT AND ITS HOMOGENEOUS SUB COMPONENTS ARE RoHS COMPLIAN.



RECOMMENDED PCB HOLE

CODE	CODE REFERENCE CHART	CODE
A	Black 9005	Violet 4003
B	Cream white 9001	Beige 1001
C	Blue 5005	Curry 1027
D	Bordeaux 4004	Carmine red 3002
E	Green 6002	Pastel orange 2003
F	Brown 8011	Pastel green 6019
G	Grey 7031	Water blue 5021

4	CONTACT	BRASS	GOLD	1
3	INSULATOR	PTFE	NATURAL	1
2	BODY	BRASS	NICKEL	1
1	HOUSING	PA9T GN2330-1	BY CODE COLOR	1
ITEMS	DESCRIPTION	MATERIAL	FINISHED	Q'TY

P/N:92801-A1XX2-CA1

<b>QUALITY SYMBOLS</b> MAJOR Ⓢ CRITICAL Ⓢ	DRAWN BY Enid	DATE 21/08/10		
	CHECKED BY Yang	DATE 21/08/10		TITLE
<b>GENERAL TOLERANCES (UNLESS SPECIFIED)</b> X ±0.5 .X ±0.25 .XX ±0.15 .XXX ±0.1 ANGLES ±2°	APPROVED BY Mike	DATE 21/08/10	<b>FAKRA ST. PLUG FOR PCB RECEPTACLE</b>	
	UNITS mm	SCALE 3:1	 SIZE A4	RFQ NO. <b>Q2007078</b>
		SHEET NO. 1 OF 1	REV A0	DWG NO. <b>12-92801-A1XX2-CA1</b>

A0	NEW RELEASED	---	Enid	Yang	2021/08/10
REV.	DESCRIPTION	ECN NO.	NAME	CHECK	DATE

REVISIONS