

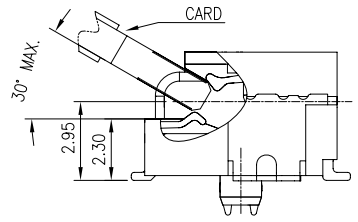
NOTES:

1. MATERIAL:
 - 1.1 HOUSING: THERMOPLASTIC, HIGH TEMP., UL94V-0; COLOR:Black
 - 1.2 CONTACT: COPPER ALLOY
 - 1.3 FITTING NAIL: COPPER ALLOY
 - 1.4 BOARD LOCK: COPPER ALLOY
2. FINISH:
 - 2.1 CONTACT:
 - UNDERPLATING: 50u" MIN. NICKEL OVERALL.
 - FINISH:GOLD 3u" MIN. ON CONTACT,GOLD FLASH ON SOLDER TAIL
 - 2.2 FITTING NAIL:
 - UNDERPLATING: 50u" MIN. NICKEL OVERALL.
 - FINISH:100~200u" MATT TIN OVER ALL
 - 2.3 BOARD LOCK:
 - UNDERPLATING: 50u" MIN. NICKEL OVERALL.
 - FINISH:MATT TIN OVER ALL
3. REFLOW SOLDER CAPABLE TO 260°C PER ACES SPEC.
4. ROHS COMPLIANT PRODUCT.
5. SPEC. PLS. REFER TO PS-91781-xxxxx
6. PACKING. SPEC. PLS. REFER TO 91783-314xx(TRAY)
7. PACKING SPEC. PLS. REFER TO 91783-314xx(REEL)
8. THE PCB WARPAGE : 0.05MAX.
9. THE PCB Coplanarity : 0.08MAX.(ex.86.54mm&CONN.LAYOUT AREA),
10. PART NUMBER

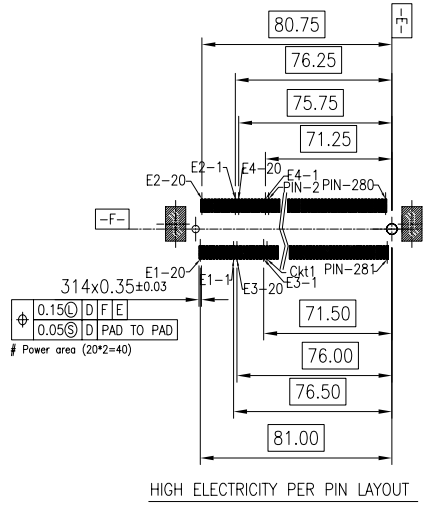
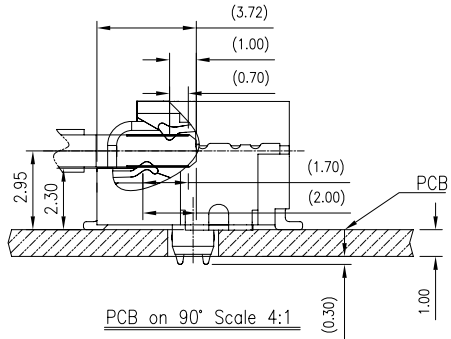
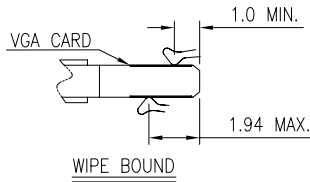
91783-XXX X X-XX-XX
 Color 01:Black
 POLARIZATION NV:FITTING NAIL (SEE SHEET-2)
 PLATING 8:GOLD 3u" MIN. ON CONTACT, GOLD FLASH ON SOLDER TAIL
 M:GOLD 3u" ON CONTACT ARER, GOLD 1u" ON SOLDER TAIL

NO OF CKT 314: 314 PIN
 PACKING 0:REEL 2:TRAY

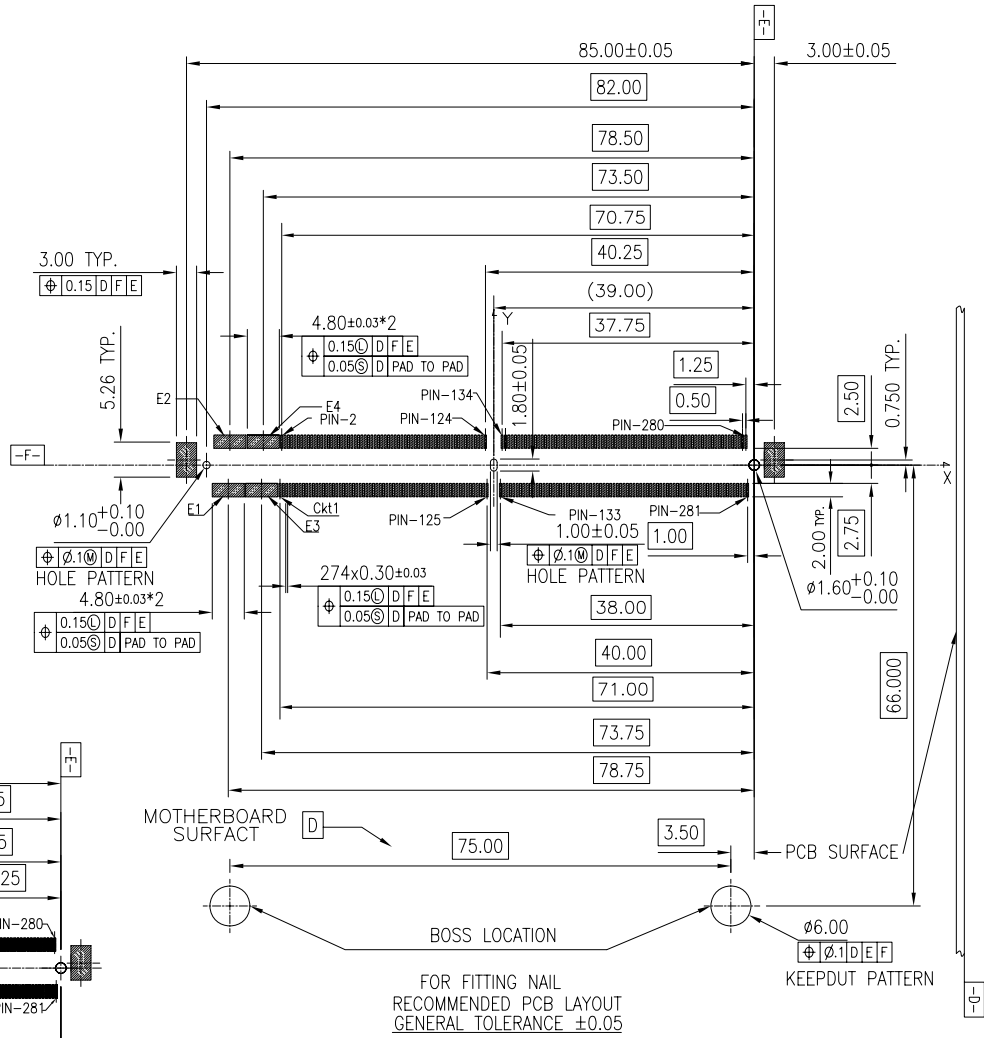
一般公差 TOLERANCES X ±0.5 .XX ±0.15 X ±0.25 .XXX ±0.1 ANGLES ±2°		宏致電子股份有限公司 Aces Electronics Co.,Ltd.	
檢驗尺寸標示 SYMBOLS INDICATE CLASSIFICATION DIMENSION	品名 (TITLE) MXM-3 314 PINS 0.5mm PITCH EDGE CARD CONN. SMT D/R R/A STD TYPE H=4.8mm (BTB H=2.3)	製圖 (DR) 14/08/12 FENGXIAO	審核 (CHKD) TIM
Ⓢ MARK IS CRITICAL DIM. Ⓢ MARK IS MAJOR DIM.	圖號 (DWG NO.) 91783-314XX-XX-XX	核准 (APPD) TIM	
表面處理 (FINISH)	比例 (SCALE) 1:1 單位 (UNITS) mm		張數 (SHEET) 10F 3 SIZE A4 REV A



PCB 30° MAX In conn. Scale 4:1



HIGH ELECTRICITY PER PIN LAYOUT



一般公差 TOLERANCES X ±0.5 XX ±0.15 X ±0.25 .XXX ±0.1 ANGLES ±2°		宏致電子股份有限公司 Aces Electronics Co.,Ltd.	
檢驗尺寸標示 SYMBOLS INDICATE CLASSIFICATION DIMENSION		品名 (TITLE) MXM-3 314 PINS 0.5mm PITCH EDGE CARD CONN. SMT D/R R/A STD TYPE H=4.8mm (BTB H=2.3)	
MARK IS CRITICAL DIM. MARK IS MAJOR DIM.		製圖 (DR) FENGXIAO 14/08/12 審核 (CHKD) TIM 圖號 (DWG NO.) 91783-314XX-XX-XX 核准 (APPD) TIM	
表面處理 (FINISH)		比例 (SCALE) 1:1 單位 (UNITS) mm 張數 (SHEET) 20F 3 尺寸 (SIZE) A4 版次 (REV) A	

A B C D E F

1

1

2

2

3

3

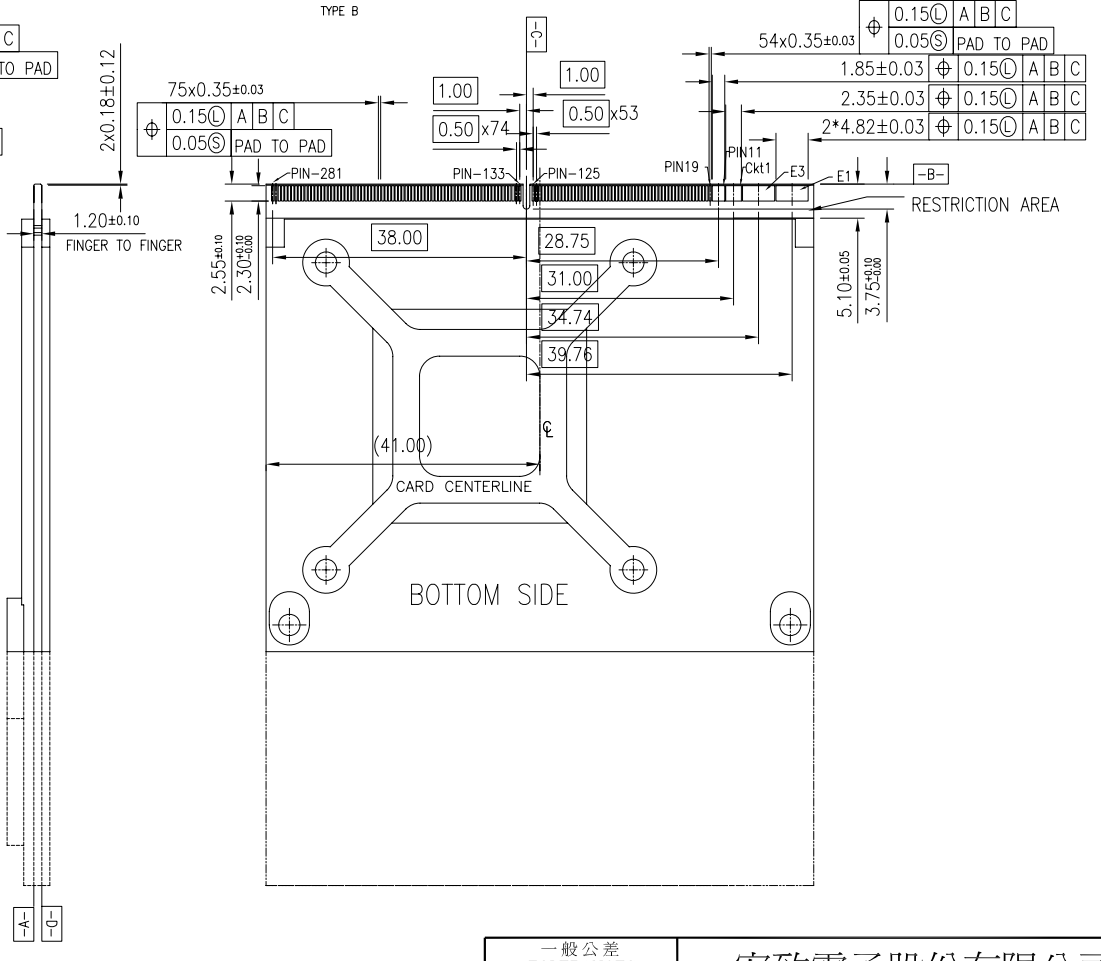
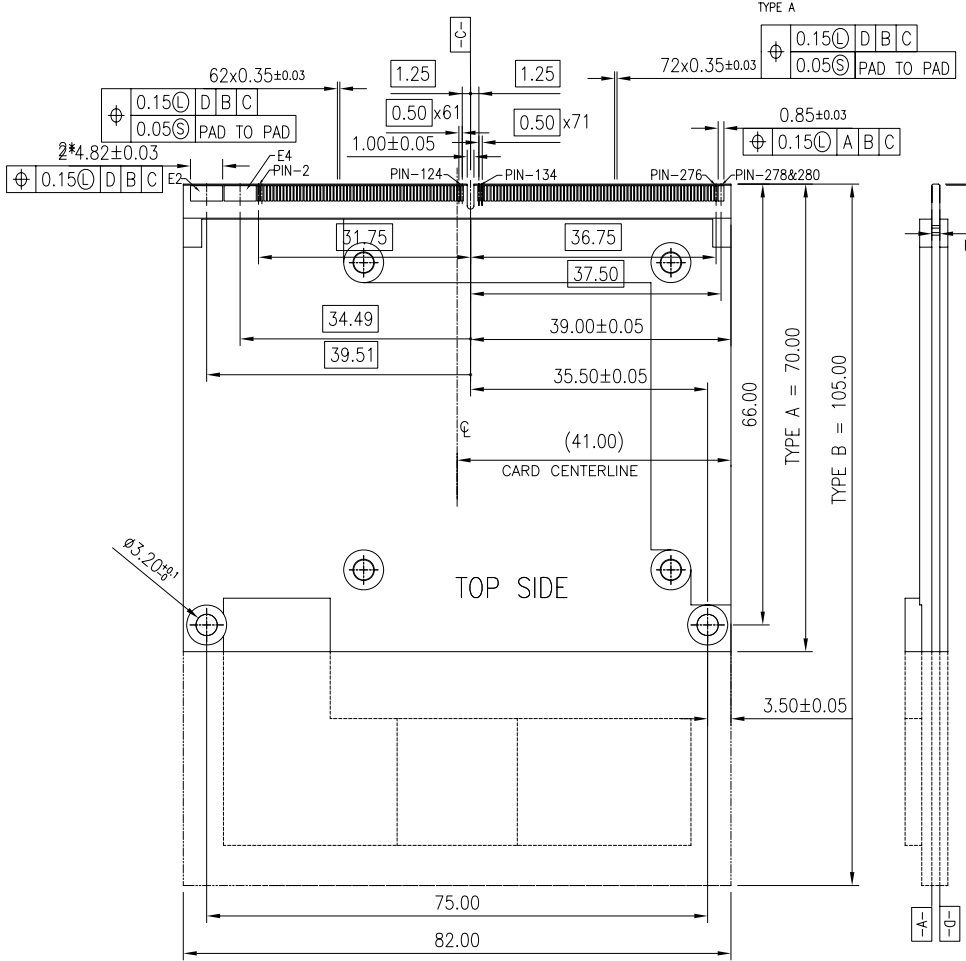
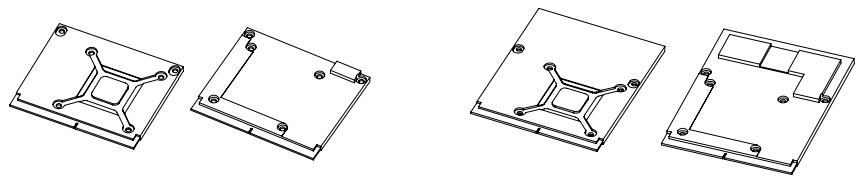
4

4

5

5

A B C D E F



MXM-3 314PIN GOLD FINGER
 MXM-3 MAX 321 CONTACT LOCATION
 314 USEABLE (7 LOST TO KEY)

一般公差 TOLERANCES X ±0.5 .XX ±0.15 X ±0.25 .XXX ±0.1 ANGLES ±2°		宏致電子股份有限公司 Aces Electronics Co.,Ltd.	
檢驗尺寸標示 SYMBOLS INDICATE CLASSIFICATION DIMENSION MARK IS CRITICAL DIM. MARK IS MAJOR DIM.		品名 (TITLE) MXM-3 314 PINS 0.5mm PITCH EDGE CARD CONN. SMT D/R R/A STD TYPE H=4.8mm (BTB H=2.3)	製圖 (DR) FENGXIAO 14/08/12 審核 (CHKD) TIM 核准 (APPD) TIM
表面處理 (FINISH)		圖號 (DWG NO.) 91783-314XX-XX-XX	張數 (SHEET) 30F 3 圖號 (DWG NO.) 91783-314XX-XX-XX
比例 (SCALE) 1:1		單位 (UNITS) mm	圖號 (DWG NO.) 91783-314XX-XX-XX