

RECOMMEND PCB LAYOUT  
GENERAL TOLERANCE ±0.05

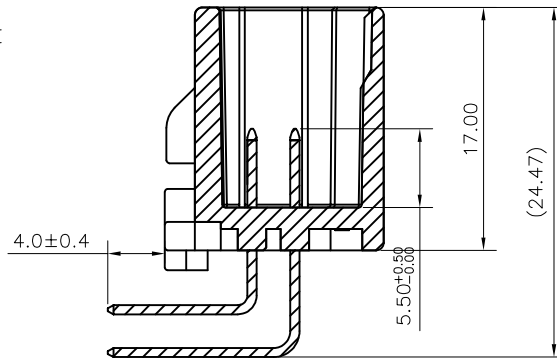
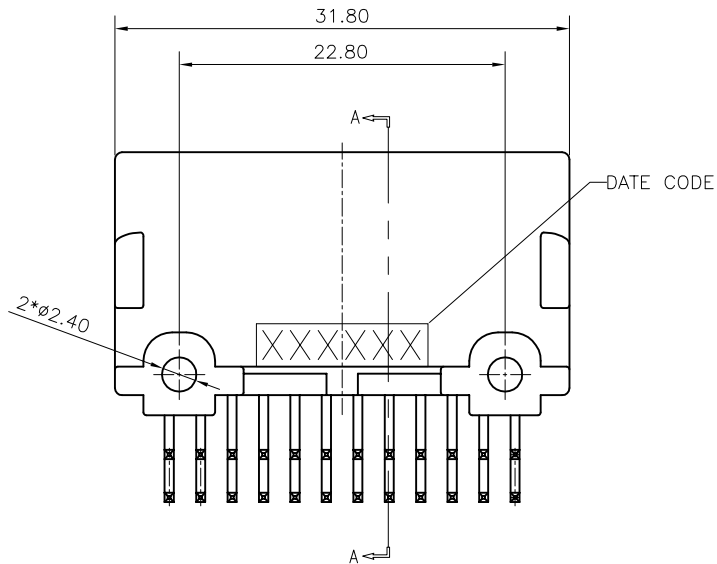
- NOTES:
- MATERIAL:
    - MATERIAL: PBT, UL 94-HB, COLOR IS NATURAL.
    - CONTACT: BRASS
  - FINISH:
    - 10u" Min. NICKEL PLATING OVERALL
    - 50u" Min. Tin PLATING OVERALL
  - THE CAVITY, LOGO MAX HEIGHT 0.10mm ABOVE SURFACE. THE TEXT HEIGHT IS ABOUT 1mm.
  - IF ANY DIMENSIONS OR DRAFT ANGLES WEREN'T MARKED, PLS. REFER TO 3D DRAWING
  - RECOMMENDED SCREW: PAN-HEADED, TAPPING SCREW OF DIA 3mm, LENGTH: SEE TABLE A
  - SPEC. PLS. REFER TO SPEC-91235-XXXX
  - PACKAGE PLS. REFER TO 91235-024XX-TRAY
  - PART NUMBER

91235-024 X X-CA1  
NO OF CKT | PLATING  
PACKING | 3: PURE TIN (LEAD FREE)

DATE CODE 編碼原則

91235-024XX-001  
3 A 08 T  
年分代碼: 3=2013年  
月份代碼: A(1月), B(2月), ...  
日期代碼: 8=08號  
廠別代碼:  
重工品代碼: " & " " \_ " 非重工品代碼為空白

廠別代碼:  
T=TW-台灣  
D=DG-東莞  
E=KS-昆山長江廠  
K=KS-昆山青陽廠  
G=CG-重慶



SECTION A-A

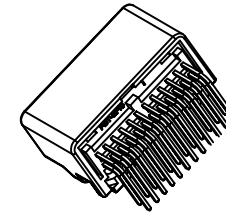
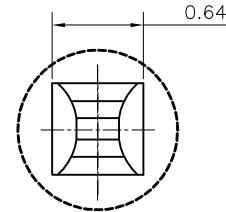
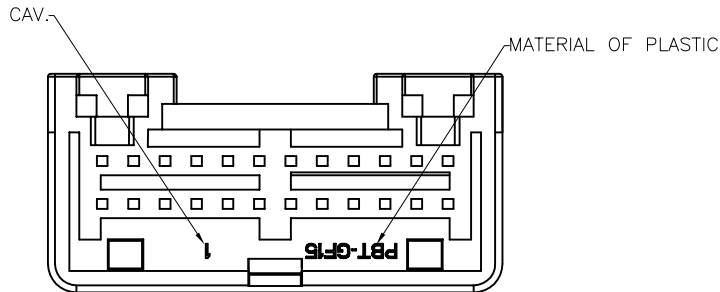


TABLE A

PCB THICKNESS (mm)	1.2	1.6
NOMINAL LENGTH OF SCREW(mm)	5	6



DETAIL A (10X)

一般公差 <b>TOLERANCES</b> X ±0.5 .XX ±0.15 X ±0.25 .XXX ±0.1 ANGLES ±2°		<b>宏致電子股份有限公司</b> <b>Aces Electronics Co.,Ltd.</b>	
檢驗尺寸標示 <b>SYMBOLS</b> <b>INDICATE CLASSIFICATION DIMENSION</b> <b>MARK IS CRITICAL DIM.</b> <b>MARK IS MAJOR DIM.</b>	品名 (TITLE) 2.2MM PITCH WTB WAFER CONN. 圖號 (DWG.NO) 91235-024XX-CA1	製圖 (DR) 17/02/14 Lin Chia Cheng 審核 (CHKD) Lee Kuang En 核准 (APPD) Lee Kuang En	張數 (SHEET) 1 OF 1 比例 (SCALE) 2:1 單位 (UNITS) mm
表面處理 (FINISH)		張數 (SHEET)	1 OF 1 尺寸 (SIZE) A4 版次 (REV) B