

SECTION A-A

NOTES:

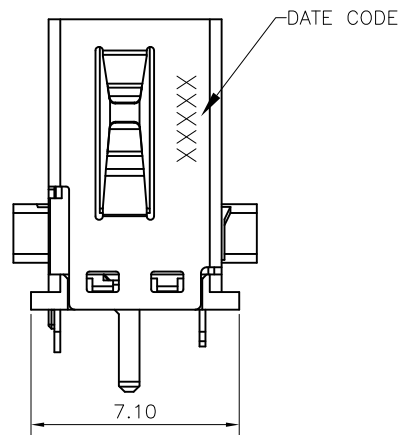
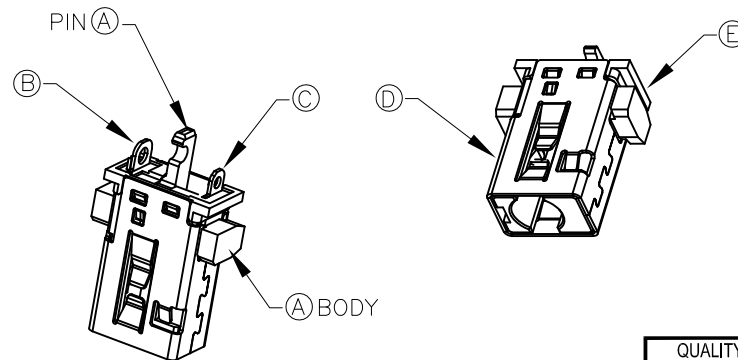
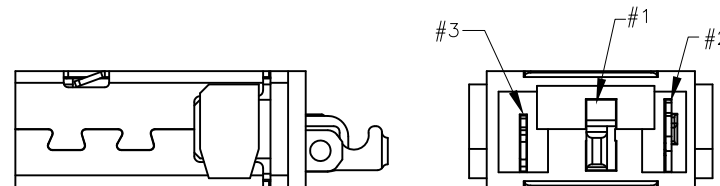
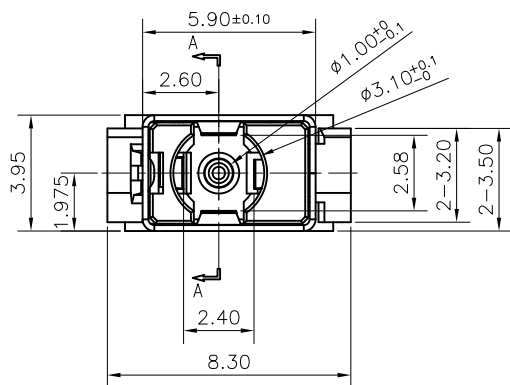
- MATERIAL:
SEE TABLE
CONTACT PLATING:
GOLD FLASH ON CONTACT AREA, TIN 80~150u" ON SOLDER AREA, NI 50~100u" OVERALL
- THE CAVITY, LOGO MAX HEIGHT 0.10mm ABOVE SURFACE.
THE TEXT HEIGHT IS ABOUT 1mm.
- IF ANY DIMENSIONS OR DRAFT ANGLES WEREN'T MARKED,
PLS. REFER TO 3D DRAWING
- ELECTRICAL CHARACTERISTICS:
5-1.RATING: DC 20V 5A (OVER AMBIENT ΔT: 30°C MAX.)
5-2.CONTACT: RESISTANCE:20mΩ MAX.(INITIAL)
30mΩ MAX.(AFTER LIFT TEST)
5-3.DIELECTRIC WITHSTANDING VOLTAGE:500V AC FOR ONE MINUTE.
5-4.INSULATION RESISTANCE:100MΩ MIN. MEASURED BY 500V DC.
- MATING FORCE/UNMATING FORCE:SEE APPEND FIGURE.1
- LIFT TEST: 5000 CYCLES.
- SPEC. PLS. REFER TO SPEC-58900-XXXX
- PART NUMBER

58900-003 X X -00X

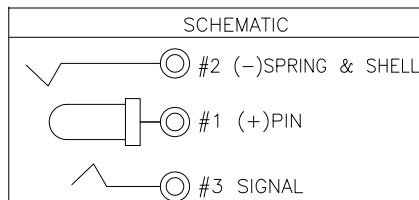
CKT	COLOR	MATERIAL
0	NATURAL OR WHITE	PA9T
1	BLACK	LCP
2	BLUE (298C)	PA10T
6	YELLOW (123C)	PA10T

PLATING:
2: GOLD FLASH

PACKING:
2: TRAY



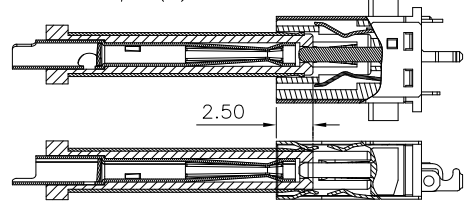
NO	DESCRIPTION	Q'TY	MATERIAL	PLATING & COLOR
E	COVER	1	LCP+30%GF E130i UL94V-0	BLACK
D	SHELL	1	C5210-EH 0.2T	Ni 60u" MIN.
C	SIGNAL	1	YCUT-FX-H 0.2T	GOLD FLASH
B	SPRING	1	YCUT-FX-H 0.2T	GOLD FLASH
A	INSERT MOLDING	1	PIN: C2680-H 1.0T	GOLD FLASH
		1	BODY: UL94V-0 ; SEE NOTES	SEE NOTES



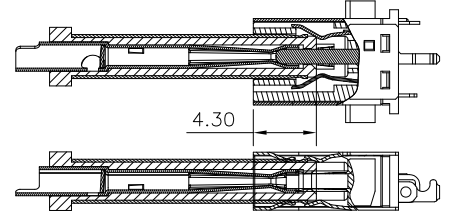
QUALITY SYMBOLS MAJOR CRITICAL GENERAL TOLERANCES (UNLESS SPECIFIED) X. ±0.5 .X ±0.25 .XX ±0.15 .XXX ±0.10 ANGLES ±1°	DRAWN BY Ko, meng hsun DATE 18/01/27	
	CHECKED BY Chang, chun te DATE 18/01/27	
APPROVED BY Kuo, rong hsun DATE 18/01/27	UNITS mm	SIZE A4
SCALE 4:1	SHEET NO. 1 OF 2	DWG NO. 58900-003XX-00X
		PART NO. SEE NOTES



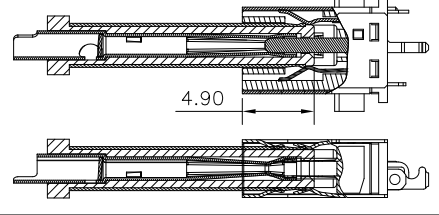
1. Ground pin (-) contact



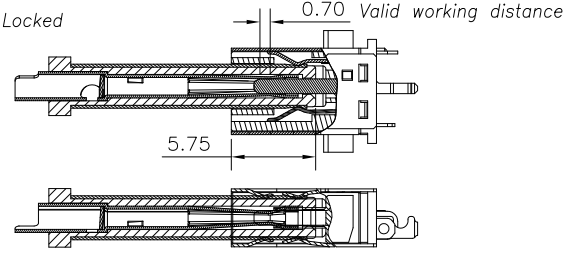
2. Power pin (+) contact



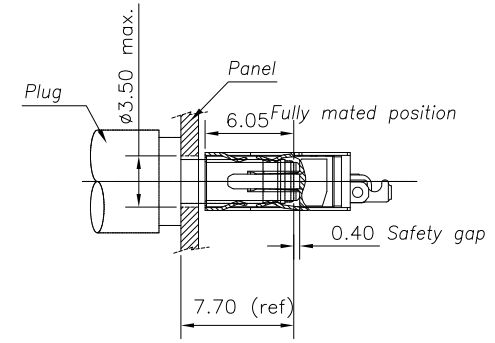
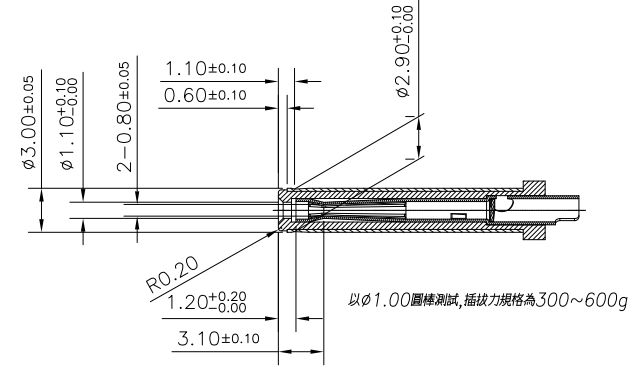
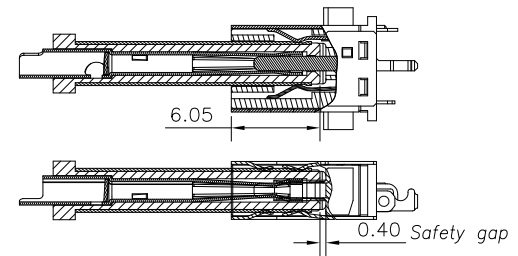
3. Signal pin contact



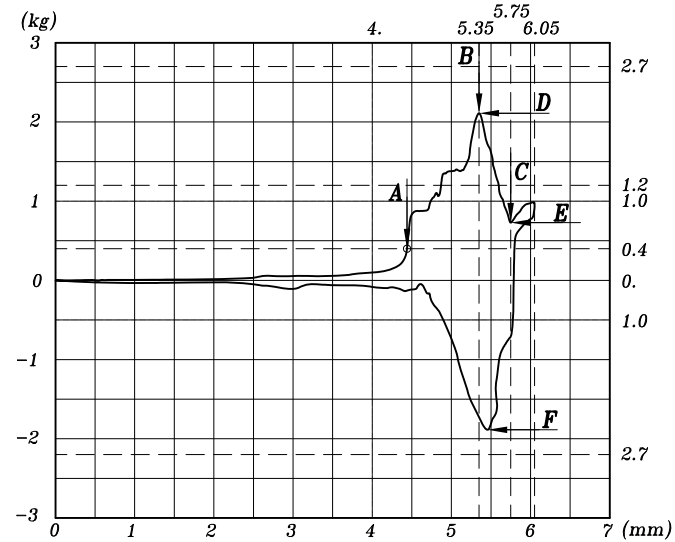
4. Locked



5. Fully mated position



APPENDED FIGURE 1.



- A: 插入最明顯手感力量起始點位置(mm)
→ 力量爬升至0.4kg時,位置必須在4.0mm之後
(Plug插入至4.0mm之前力量不可超過0.4kg)
- B: 插入力最大波峰值位置(mm)
→ 5.35+/- 0.2mm
- C: 插入LOCK力量下降波谷位置(mm)
→ 5.75+/- 0.2mm
- D: 插入力最大波峰值(kg)
→ Initial 1.2~2.7kg, after life test 1.0~2.7kg
- E: 插入LOCK力量下降波谷值(kg)
→ (D值-E值) > 0.5kg
- F: 拔出力最大值(kg)
→ (Initial/after life test) 1.0~2.7kg

QUALITY SYMBOLS MAJOR CRITICAL GENERAL TOLERANCES (UNLESS SPECIFIED) X. ±0.5 .X ±0.25 .XX ±0.15 .XXX ±0.10 ANGLES ±1°	DRAWN BY Ko, meng hsun DATE 18/01/27	 ACES ELECTRONICS
	CHECKED BY Chang, chun te DATE 18/01/27	
	APPROVED BY Kuo, rong hsun DATE 18/01/27	SIZE A4 DWG. NO. 58900-003XX-00X
	UNITS mm SCALE 2:1	 SHEET NO. 2 OF 2 REV. C PART NO. SEE NOTES