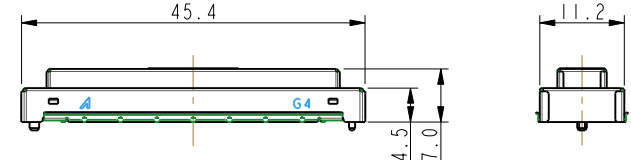
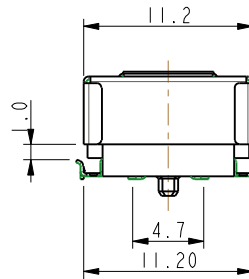
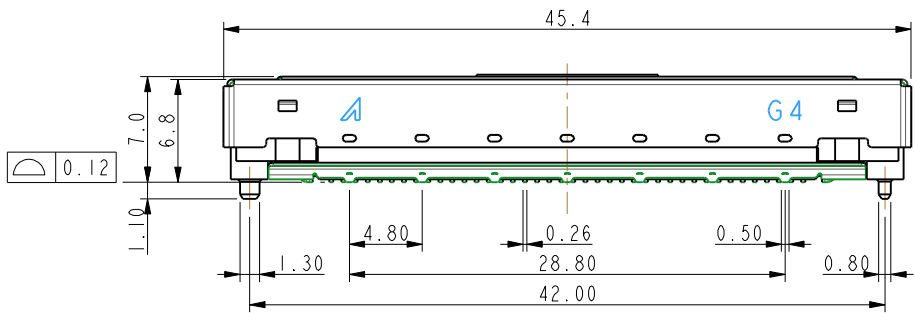
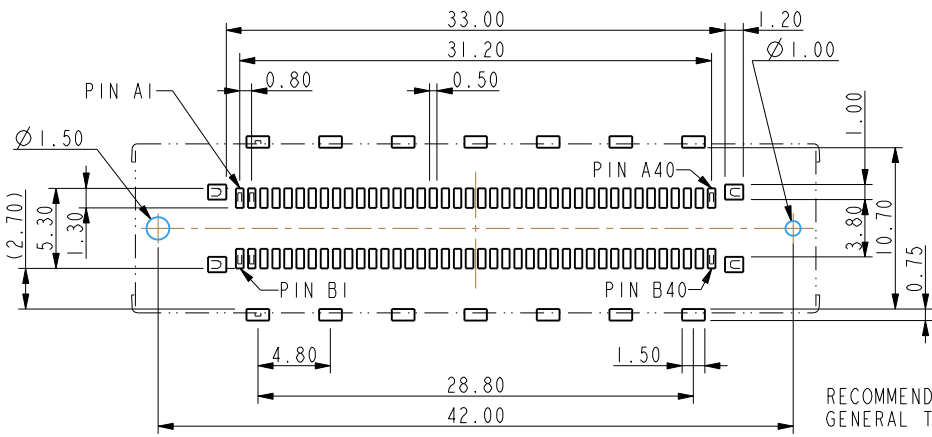


- NOTES:
- MATERIAL:
 - HOUSING: THERMOPLASTIC, HIGH TEMP., UL94V-0; COLOR: BLACK.
 - COVER: THERMOPLASTIC, HIGH TEMP., UL94V-0; COLOR: BLACK.
 - CONTACT: COPPER ALLOY
 - FITTING NAIL: COPPER ALLOY
 - SHELL: SUS
 - FINISH:
 - CONTACT: SEE ORDER INFORMATION.
 - UNDERPLATING: 50~100 μ NICKEL OVERALL.
 - REFLOW SOLDER CAPABLE TO 260°C PER ACES SPEC.
 - SPEC. PLS. REFER TO PS-51080-xxxxx-xxx
 - PACKAGE PLS. REFER TO 51081-xxxCR-00
 - MATING CONNECTOR P/N: 51082-xxxxx-xxx
 - PART NUMBER
51081-XXX X X-001
- CKTS ——— CONTACT PLATING
080.80PIN ——— 2.GOLD FLASH
PACK ———
4. TAPE&REEL WITH MYLAR

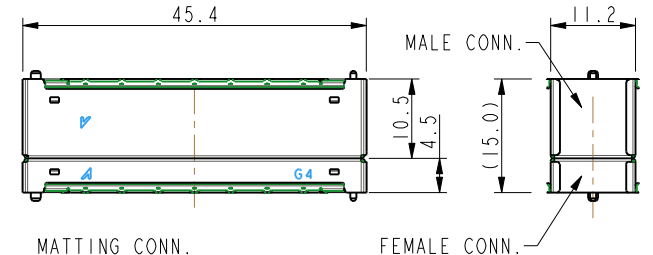


STEEL ASSEMBLY DIMENSIONS
Scale 1:1

PROPOSAL DRAWING



RECOMMEND PCB LAYOUT
GENERAL TOLERANCE ± 0.05



MATING CONN.

FEMALE CONN.

PIN DEFINE

Pin	1	2	3	4	5	6	7	8	9	10	11	12	13	14	15	16	17	18	19	20
SIDE A	G	G	S	S	G	G	S	S	G	G	S	S	G	G	S	S	G	G	S	S
SIDE B	-	-	G	G	S	S	G	G	S	S	G	G	S	S	G	G	S	S	G	G
Pin	21	22	23	24	25	26	27	28	29	30	31	32	33	34	35	36	37	38	39	40
SIDE A	G	G	S	S	G	G	S	S	G	G	-	-	-	-	-	-	-	-	-	-
SIDE B	S	S	G	G	S	S	G	G	S	S	G	G	-	-	-	-	-	-	-	-

QUALITY SYMBOLS MAJOR	DRAWN BY Chen, chun yuan	DATE 19/06/12
CRITICAL	CHECKED BY Iso, i chiao	DATE 19/06/12
GENERAL TOLERANCES (UNLESS SPECIFIED)	APPROVED BY Wang, chun sheng	DATE 19/06/12
X. ± 0.5	UNITS mm	
.X ± 0.25	SCALE 2:1	SHEET NO. 1 OF 1
.XX ± 0.15		REV. A
.XXX ± 0.1		SIZE A4
ANGLES $\pm 2^\circ$		DRAW NO. 51081-xxxxx-xxx

ACES ELECTRONICS

TITLE
0.8mm BTB CONN. H: 15.0mm
FEMALE SIDE

PART NO.
SEE NOTES