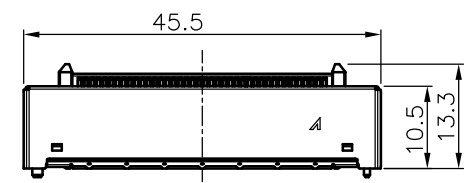
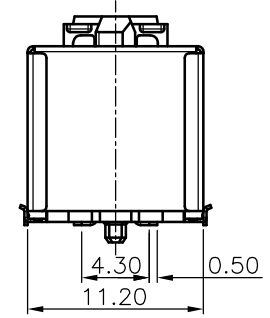
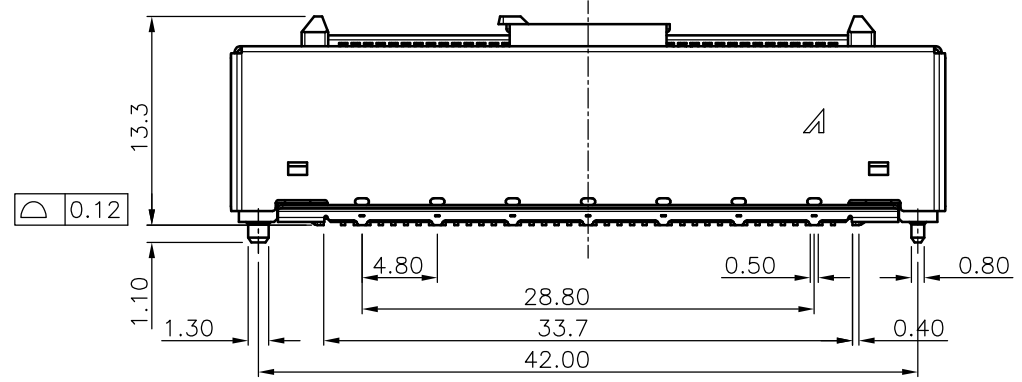
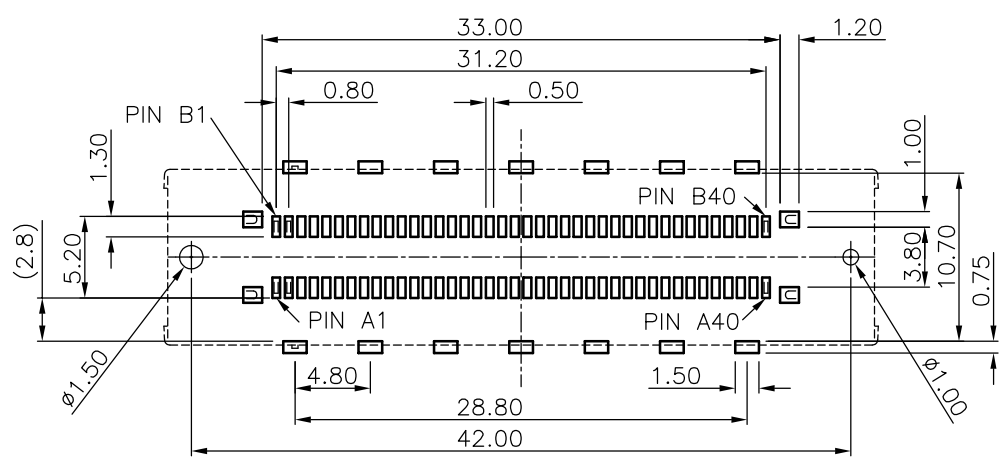
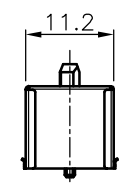


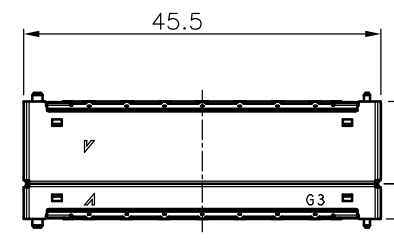
- NOTES:
- MATERIAL:
 - HOUSING: THERMOPLASTIC, HIGH TEMP., UL94V-0; COLOR: BLACK.
 - COVER: THERMOPLASTIC, HIGH TEMP., UL94V-0; COLOR: WHITE.
 - CONTACT: COPPER ALLOY
 - FITTING NAIL: COPPER ALLOY
 - SHELL: SUS
 - FINISH:
 - CONTACT: SEE ORDER INFORMATION.
 - UNDERPLATING: 50~100u" NICKEL OVERALL.
 - REFLOW SOLDER CAPABLE TO 260°C PER ACES SPEC.
 - SPEC. PLS. REFER TO PS-51079-xxxx-xxx
 - PACKAGE PLS. REFER TO 51080-xxxCR-00
 - MATING CONNECTOR P/N: 51079-xxxx-xxx
 - PART NUMBER
51080-XXX X X-001
- CKTS 080.80PIN PACK
CONTACT PLATING 2.GOLD FLASH
7.TAPE&REEL WITH COVER



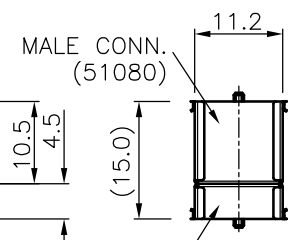
STEEL ASSEMBLY DIMENSIONS
Scale 1:1



RECOMMEND PCB LAYOUT
GENERAL TOLERANCE ±0.05



MATING CONN.



FEMALE CONN. (51079)

QUALITY SYMBOLS MAJOR Ⓜ CRITICAL Ⓢ GENERAL TOLERANCES (UNLESS SPECIFIED) X. ±0.5 .X ±0.25 .XX ±0.15 .XXX ±0.1 ANGLES ±2°	DRAWN BY CHEN CHUN YUAN	DATE 19/12/11	
	CHECKED BY TSO I HUNG	DATE 19/12/11	
	APPROVED BY WANG CHUN SHENG	DATE 19/12/11	
	UNITS mm		
SCALE 2:1	SHEET NO. 1 OF 1	REV A	DWG NO. 51080-xxxx-xxx