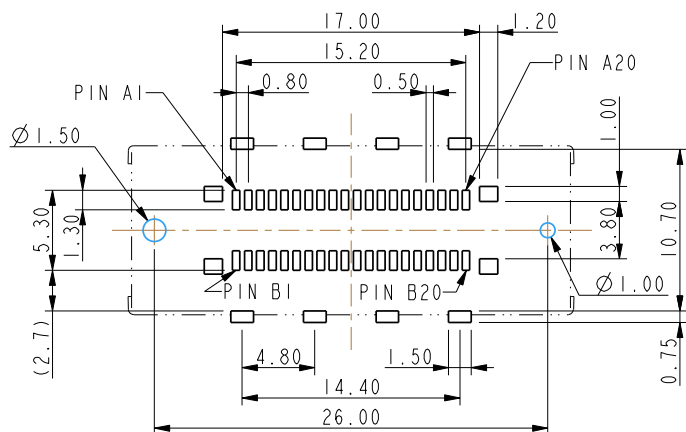
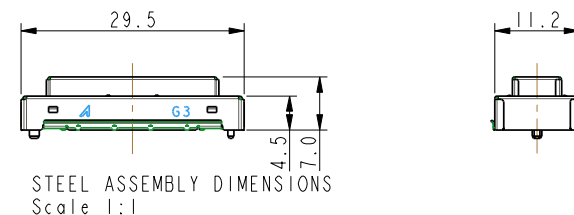
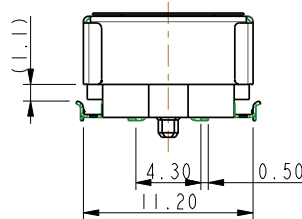
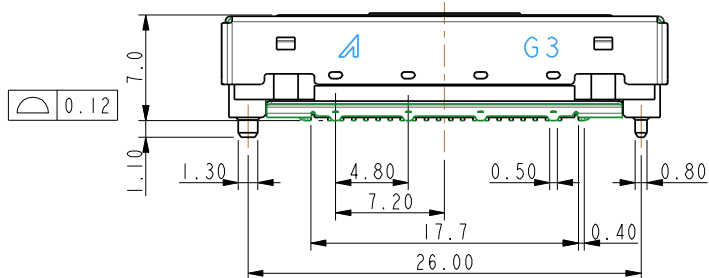


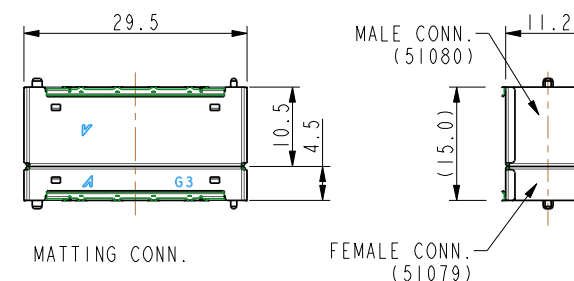
NOTES:

1. MATERIAL:
 - 1.1 HOUSING: THERMOPLASTIC, HIGH TEMP., UL94V-0; COLOR: BLACK.
 - 1.2 COVER: THERMOPLASTIC, HIGH TEMP., UL94V-0; COLOR: BLACK.
 - 1.3 CONTACT: COPPER ALLOY
 - 1.4 FITTING NAIL: COPPER ALLOY
 - 1.5 SHELL: SUS
 2. FINISH:
 - CONTACT: SEE ORDER INFORMATION.
 - UNDERPLATING: 50~100 μ NICKEL OVERALL.
 3. REFLOW SOLDER CAPABLE TO 260°C PER ACES SPEC.
 4. SPEC. PLS. REFER TO PS-51080-xxxxx-xxx
 5. PACKAGE PLS. REFER TO 51079-xxxCR-00
 6. MATING CONNECTOR P/N: 51080-xxxxx-xxx
 7. PART NUMBER
51079-XXX X X-001
- CKTS ——— CONTACT PLATING
 040.40PIN ——— 2.GOLD FLASH
 PACK ———
 4.TAPE&REEL WITH MYLAR



RECOMMEND PCB LAYOUT
GENERAL TOLERANCE ± 0.05

PROPOSAL DRAWING



QUALITY SYMBOLS MAJOR CRITICAL	DRAWN BY Chen, chun yuan	DATE 20'03/25	ACES ELECTRONICS			
	CHECKED BY Iso, i chiao	DATE 20'03/25			TITLE 0.8mm BTB CONN. H: 15.0mm FEMALE SIDE	
GENERAL TOLERANCES (UNLESS WPECIFIED)	APPROVED BY Wang, chun sheng	DATE 20'03/25	UNITS mm		SIZE A4	DRAW NO. 51079-xxxxx-xxx
X. ± 0.5 .X ± 0.25 .XX ± 0.15 .XXX ± 0.1 ANGLES $\pm 2^\circ$	SCALE 2:1	SHEET NO. 1 OF 1	REV. A	PART NO. SEE NOTES		