

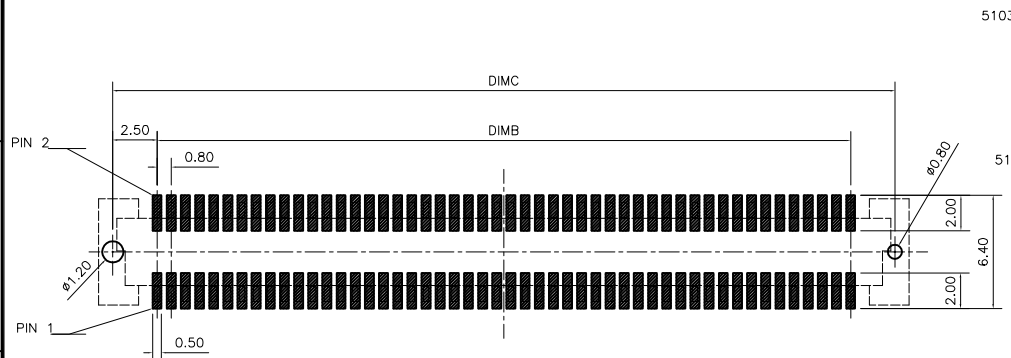
51039-XXX X X-XXX

CKTS	XXX	Material&Color
	001	LCP&NATURE

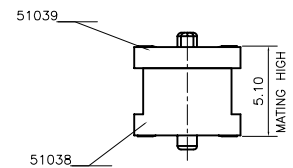
PLATING
 P:8u"MIN GOLD ON CONTACT(LEAD FREE)
 1:GOLD FLASH ON CONTACT(LEAD FREE)
 C:15u"MIN GOLD ON CONTACT AND GOLD FLASH ON SOLDER AREA

- NOTES:
- MATERIAL:
 - HOUSING: LCP+GF20% UL 94V-0,NATURE
 - CONTACT: C5210
 - FINISH:
 - CONTACT: 50~100u" NICKEL UNDERPLATING OVERALL.
 - REFLOW SOLDER CAPABLE TO 260 C PER ACES SPEC.
 - SPEC.PLS REFER TO PS-51039-XXXXX-XXX
 - PACKAGE PLS REFER TO 51039-XXXXX-XX-TRP
 - PART NUMBER

- PACKING
- 0:TAPE REEL
 - 4:TAPE REEL& WITH MYLAR
 - 5:TUBE WITH MYLAR



RECOMMEND PCB LAYOUT
 TOLERANCE±0.05mm



CKT	DIM A	DIM B	DIM C	DIM D	DIM E	DIM F
40	21.8	15.2	20.2	18.8	20.15	17.8
60	29.8	23.2	28.2	26.8	28.15	25.8
80	37.8	31.2	36.2	34.8	36.15	33.8
100	45.8	39.2	44.2	42.8	44.15	41.8
120	53.8	47.2	52.2	50.8	52.15	49.8
160	69.8	63.2	68.2	66.8	68.15	65.8

QUALITY SYMBOLS MAJOR Ⓢ CRITICAL Ⓢ GENERAL TOLERANCES (UNLESS SPECIFIED) X. ±0.5 .X ±0.25 .XX ±0.15 .XXX ±0.1 ANGLES ±2°	DRAWN BY Guo Fei DATE 22/02/26	
	CHECKED BY XuZhiYong DATE 22/02/26	
APPROVED BY XuZhiYong DATE 22/02/26	UNITS mm	SIZE A4
SCALE 1:1	SHEET NO. 1 OF 1	RFO NO. N/A
	REV E	DWG NO. 51039-xxxxx-xxx