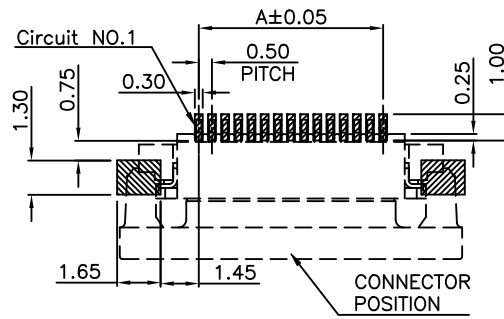
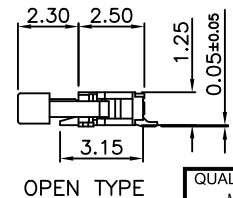
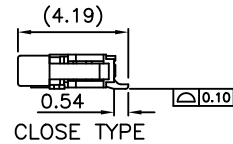
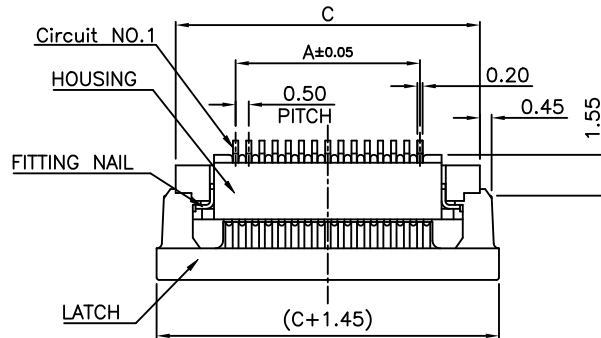


**RECOMMENDED APPLICABLE FPC LAYOUT**  
(THICKNESS:0.3±0.03)



**PCB PATTERN LAYOUT**



- NOTES:**
- MATERIAL:**
    - HOUSING: THERMOPLASTIC, HIGH TEMP., UL94V-0;
    - CONTACT: COPPER ALLOY
    - FITTING NAIL: COPPER ALLOY
    - LATCH: THERMOPLASTIC, HIGH TEMP., UL94V-0;
  - FINISH:**
    - CONTACT:**
      - 50u" MIN. NICKEL UNDERPLATING OVERALL.
      - N:120u" MIN. MATTE TIN PLATING
      - 1: GOLD FLASH ON CONTACT AND SOLDER TAIL
    - FITTING NAIL:**
      - 50u" MIN. NICKEL UNDERPLATING OVERALL.
      - N:120u" MIN. MATTE TIN PLATING
      - 1:GOLD FLASH PLATING
  - REFLOW SOLDER CAPABLE TO 260°C PER ACES SPEC.
  - SPEC. PLS. REFER TO PS-50525-XXXX-XXX
  - PACKAGE PLS. REFER TO 88497-xx0x-TRP
  - PART NUMBER**  
50530-XXX X X-XXX

NO OF CKT	XXX	Housing Color.	Actuator Color.
	001	BLACK	WHITE

PACKING  
0:REEL  
1:TUBE

PLATING  
1: GOLD FLASH ON CONTACT AND SOLDER TAIL  
N: MATTE TIN (LEAD FREE)

CKT	Dim A	Dim B	Dim C
4	1.50	2.60	6.05
5	2.00	3.10	6.55
6	2.50	3.60	7.05
7	3.00	4.10	7.55
8	3.50	4.60	8.05
9	4.00	5.10	8.55
10	4.50	5.60	9.05
11	5.00	6.10	9.55
12	5.50	6.60	10.05
13	6.00	7.10	10.55
14	6.50	7.60	11.05
15	7.00	8.10	11.55
16	7.50	8.60	12.05
17	8.00	9.10	12.55
18	8.50	9.60	13.05
19	9.00	10.10	13.55
20	9.50	10.60	14.05
21	10.00	11.10	14.55
22	10.50	11.60	15.05
23	11.00	12.10	15.55
24	11.50	12.60	16.05
25	12.00	13.10	16.55
26	12.50	13.60	17.05
27	13.00	14.10	17.55
28	13.50	14.60	18.05
29	14.00	15.10	18.55
30	14.50	15.60	19.05

<b>QUALITY SYMBOLS</b>	DRAWN BY	DATE	<b>ACES ELECTRONICS</b>
MAJOR CRITICAL	Xu,Zhonglin	19/03/15	
<b>GENERAL TOLERANCES</b> ( UNLESS SPECIFIED )	CHECKED BY	DATE	TITLE 0.5 PITCH ZIF FPC CONN. SMT R/A B/C TYPE
	Lu, Jing Quan	19/03/15	
X. ±0.5 .X ±0.25 .XX ±0.15 .XXX ±0.1 ANGLES ±2°	APPROVED BY	DATE	RFQ NO. N/A
	hsieh, fu yu	19/03/15	REV C
	UNITS mm	SHEET NO. 1 OF 1	DWG NO. 50530-XXXXX-XXX
	SCALE 4:1	SIZE A4	