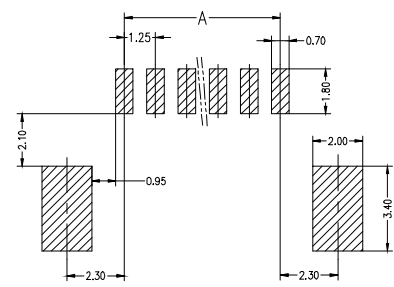
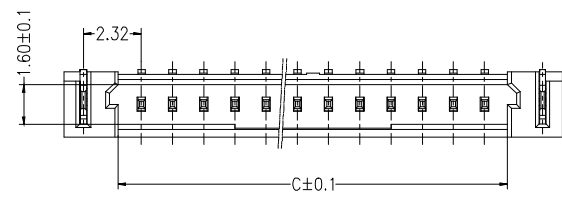
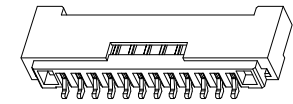
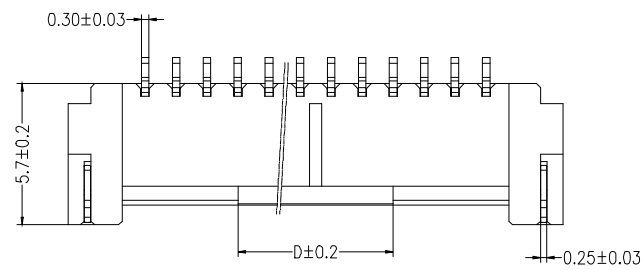
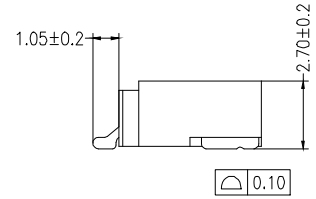
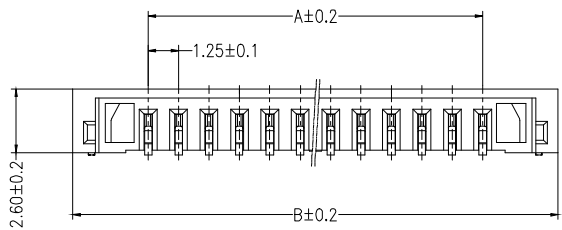


PROPRIETARY INFORMATION
COMPANY CONFIDENTIAL

REV	ECN. NO.	DESCRIPTION	ENG	DATE
A		INITIAL	Hill	12/01/21'

SPECIFICATIONS
 Current Rating: 1A AC,DC
 Voltage Rating: 125V AC,DC
 Temperature Range: -25°C ~ +85°C
 Contact Resistance: 20mΩ Max.
 Insulation Resistance: 100MΩ Min.
 Withstanding Voltage: 500V AC/minute
 321-10452-XX

No. Of PIN
 02:2PIN
 29:29PIN
 30:30PIN



RECOMMENDED PCB LAYOUT

PIN	A	B	C	D	PIN	A	B	C	D
2pin	1.25	7.45	3.05	2.50	17pin	20.00	26.20	21.80	
3pin	2.50	8.70	4.30	3.00	18pin	21.25	27.45	23.05	
4pin	3.75	9.95	5.55	3.75	19pin	22.50	28.70	24.30	
5pin	5.00	11.20	6.80	5.00	20pin	23.75	29.95	25.55	
6pin	6.25	12.45	8.05		21pin	25.00	31.20	26.80	
7pin	7.50	13.70	9.30		22pin	26.25	32.45	28.05	
8pin	8.75	14.95	10.55		23pin	27.50	33.70	29.30	
9pin	10.00	16.20	11.80		24pin	28.75	34.95	30.55	
10pin	11.25	17.45	13.05	6.25	25pin	30.00	36.20	31.80	6.25
11pin	12.50	18.70	14.30		26pin	31.25	37.45	33.05	
12pin	13.75	19.95	15.55		27pin	32.50	38.70	34.30	
13pin	15.00	21.20	16.80		28pin	33.75	39.95	35.55	
14pin	16.25	22.45	18.05		29pin	35.00	41.20	36.80	
15pin	17.50	23.70	19.30		30pin	36.25	42.45	38.05	
16pin	18.75	24.95	20.55						

GENERAL TOLERANCE		DRAWN	DATE
x.±0.50 .x±0.38 .xx±0.25 .xxx±0.15		Hill	12/01/21'
MATL SEE BOM		CHECKED	DATE
FINISH SEE NOTES			
SCALE N/A	UNIT mm	APPROVED	DATE
SHEET 1 OF 1		Hill	12/01/21'

genesis
connected solutions

TITLE: PITCH1.25mm Wafer Conn.
SMT R/A

PART NUMBER: 321-10452-XX

DRAWING NO. 321-10452

SIZE A4
REV. A

ITEM	NAME	Q'TY	DESCRIPTION	NOTE
2	Contact	N	Brass,100u" Tin Plated All Over	
1	Housing	1	LCP,UL94V-0,Beige	