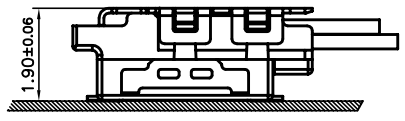
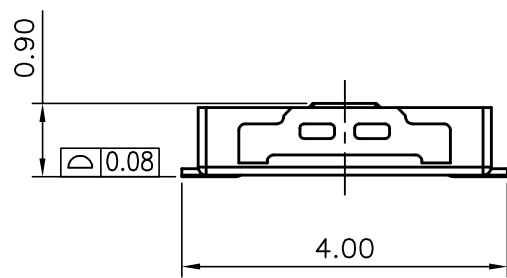
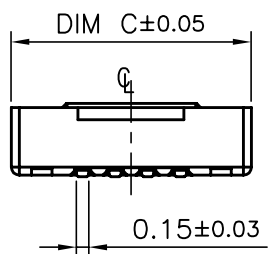
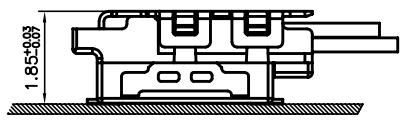


RECOMMENDED PCB LAYOUT
GENERAL TOLERANCE ±0.05



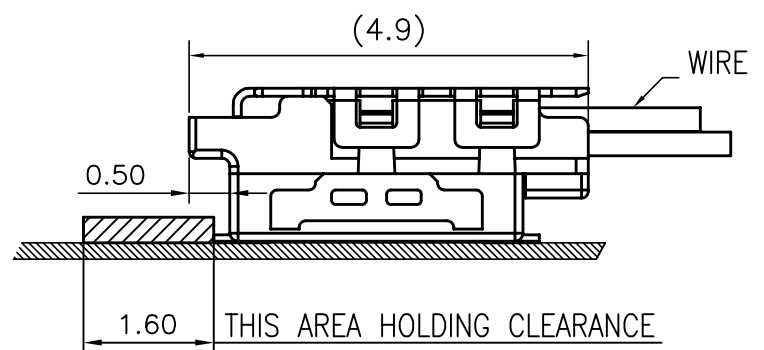
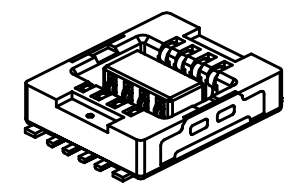
MATING 51329-xxxx-001



MATING 51329-xxxx-002

- NOTES:
 1. MATERIAL:
 1.1 HOUSING: THERMOPLASTIC, HIGH TEMP.,UL94V-0
 1.2 CONTACT: COPPER ALLOY
 2. FINISH:
 CONTACT:
 1: 50u" MIN. NICKEL PLATING OVERALL
 GOLD FLASH PLATING OVERALL
 3. SPEC. PLS. REFER TO PS-51328-XXXX-XXX
 4. PACKAGE PLS. REFER TO 51328-XXXCR-XX
 5. PART NUMBER

51328-XXX X X- 001
 NO OF CKT: | PLATING:
 0: TAPE & REEL | 1: G/F OVERALL



MATED CONDITION

010	1.60	2.60	3.35
008	1.20	2.20	2.95
006	0.80	1.80	2.55
CKT	DIM A	DIM B	DIM C

QUALITY SYMBOLS MAJOR Ⓜ CRITICAL Ⓢ	DRAWN BY TSO I CHIAO	DATE 18/06/27	ACES ELECTRONICS
GENERAL TOLERANCES (UNLESS SPECIFIED)	CHECKED BY Chen, Chun Yuan	DATE 18/06/27	
X. ±0.5 .X ±0.25 .XX ±0.15 .XXX ±0.1 ANGLES ±2°	APPROVED BY Wang, chun sheng	DATE 18/06/27	
	UNITS mm	SIZE A4	TITLE SLIMMATE SERIES 0.4mm PITCH WTB WAFER CONN (H=0.90)
	SCALE 10:1	SHEET NO. 1 OF 1	DWG NO. 51328-XXXX-XXX
		REV E	PART NO. SEE NOTES