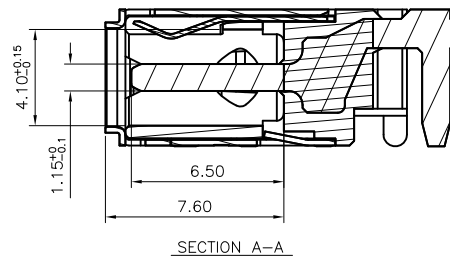
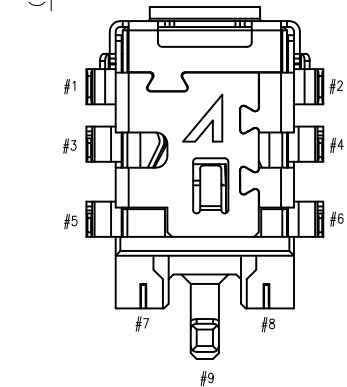
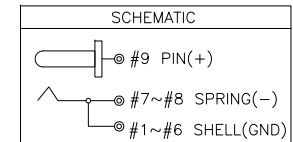
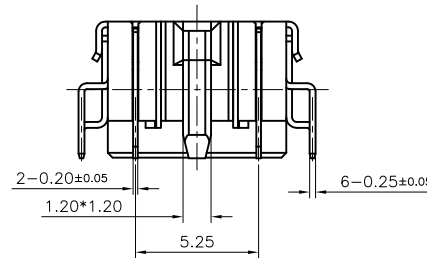
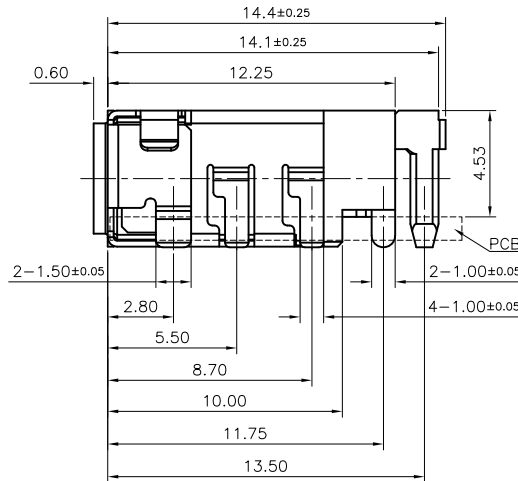
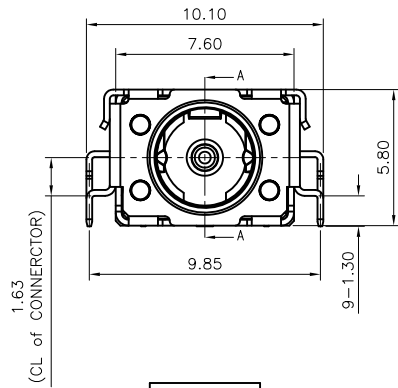


RECOMMENDED PCB LAYOUT (TOP VIEW)
(TOLERANCE=±0.05mm ; THICKNESS=1.0t)

NOTES:

- MATERIAL:
SEE TABLE
PLATING:
TERMINAL: GOLD PLATED ON CONTACT AREA, AND MATTE-TIN 60~150u" ON SOLDER AREA
SHELL: NICKEL PLATED 60u"MIN.
- THE CAVITY, LOGO MAX HEIGHT 0.10mm ABOVE SURFACE. THE TEXT HEIGHT IS ABOUT 1mm.
- IF ANY DIMENSIONS OR DRAFT ANGLES WEREN'T MARKED, PLS. REFER TO 3D DRAWING
- ELECTRICAL CHARACTERISTICS:
4.1 RATING: 20V 5A
4.2 CONTACT RESISTANCE: INITIAL 10mΩ MAX; AFTER 15mΩ MAX
4.3 DIELECTRIC WITHSTANDING VOLTAGE: 500V AC FOR ONE MINUTE
4.4 INSULATION RESISTANCE: 100MΩ MIN.MEASURED BY 500 VDC
- MECHANICAL CHARACTERISTICS:
5.1 INSERTION FORCE: 0.8~2.0kg (INITIAL & AFTER LIFE TEST)
5.2 WITHDRAWAL FORCE: 0.8~2.0kg (INITIAL & AFTER LIFE TEST)
- LIFE TEST: 8,000 CYCLES MIN
- SPEC. PLS. REFER TO SPEC-58901-XXXXX-XXX
- PACKAGE PLS. REFER TO 58901-002XX-XXX-PCK
- PART NUMBER

58908-002 X X -XXX
 CKT | | 001: NONE
 PLATING:
 2: GOLD FLASH
 PACKING:
 0:TAPE & REEL

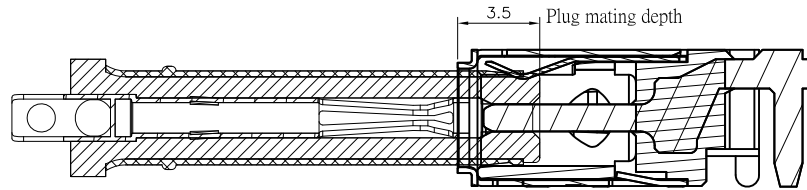


NO	DESCRIPTION	Q'TY	MATERIAL	PLATING & COLOR
C	SHELL	1	SUS304-1/2H, 0.25T	NICKEL PLATED
B	SIGNAL	1	C5210-EH, 0.2T	TIN PLATED
A	INSERT MOLDING	1	PIN:C2680-H, 1.2T	GOLD FLASH
		1	BODY:PA4T+30%GF UL94V-0	BLACK

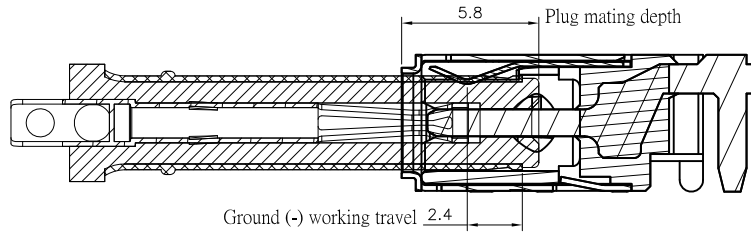
QUALITY SYMBOLS	DRAWN BY	DATE	
MAJOR Ⓜ	Ko, meng hsun	18/08/10	
CRITICAL Ⓢ	CHECKED BY	DATE	
GENERAL TOLERANCES (UNLESS SPECIFIED)	Chang, chun te	18/08/10	
X. ±0.5	APPROVED BY	DATE	TITLE
.X ±0.25	Kuo, rong hsun	18/08/10	4 Ø DC POWER JACK (CH:+1.63)
.XX ±0.15	UNITS	mm	SIZE
.XXX ±0.10	SCALE	3.2 : 1	A4
ANGLES ±1°	SHEET NO.	1 OF 2	DWG NO.
	REV	A	58908-002XX-XXX
	PART NO.		SEE NOTES



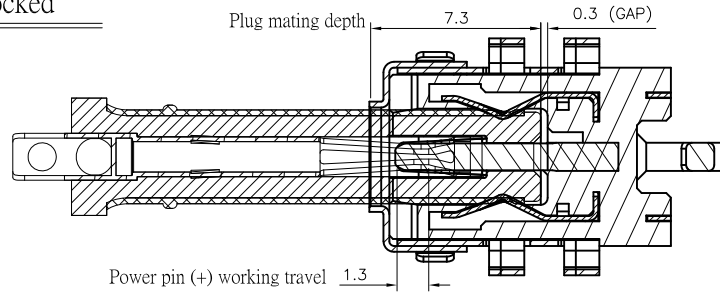
1. Ground (-) contact



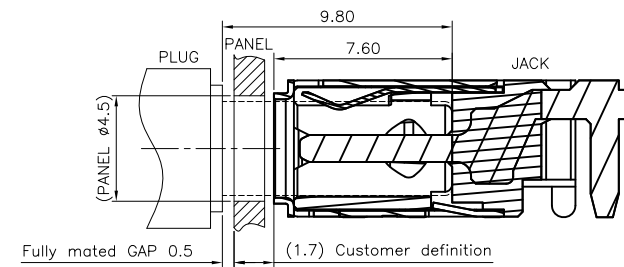
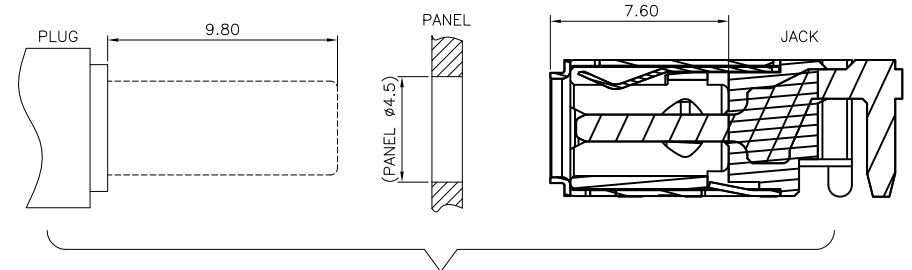
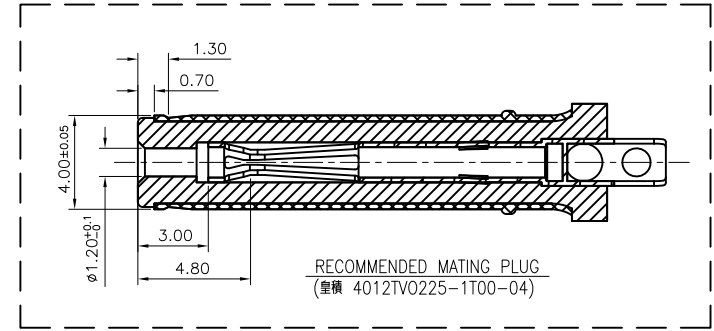
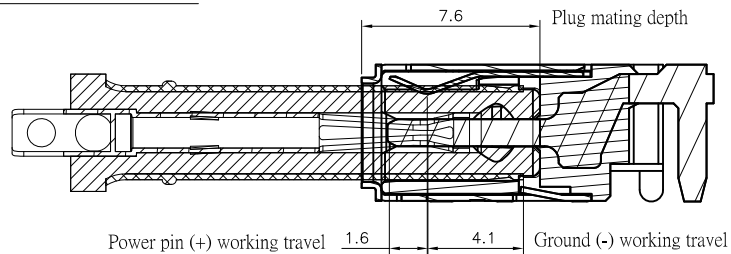
2. Power pin (+) contact



3. Locked



4. Fully mated position



Example :
 Plug Length 9.8 - Jack Mating depth 7.6 - Customer definition 1.7 = GAP 0.5

REFERENCE MATING DRAWING

QUALITY SYMBOLS MAJOR CRITICAL	DRAWN BY Ko, meng hsun	DATE 18/08/10	
	CHECKED BY Chang, chun te	DATE 18/08/10	
GENERAL TOLERANCES (UNLESS SPECIFIED) X. ±0.5 .X ±0.25 .XX ±0.15 .XXX ±0.10 ANGLES ±1°	APPROVED BY Kuo, rong hsun	DATE 18/08/10	TITLE 4 Ø DC POWER JACK (CH:+1.63)
	UNITS mm		SIZE A4
SCALE 3.2 : 1	SHEET NO. 2 OF 2	REV A	PART NO. SEE NOTES