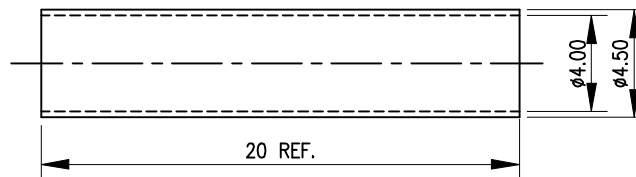
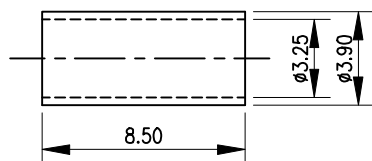
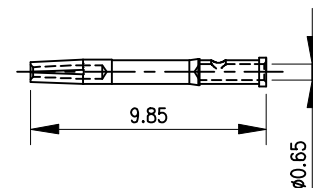
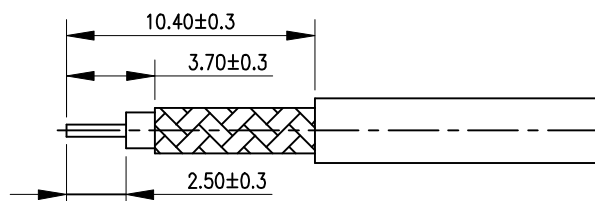


1. ELECTRICAL PERFORMANCE :
 - 1.1 IMPEDANCE : 50Ω
 - 1.2 FREQUENCY RANGE : DC ~ 4 GHz
 - 1.3 WORKING VOLTAGE : 335 Vrms Max.
 - 1.4 DIELECTRIC VOLTAGE : 1000V AC IN 1-MINUTE.
2. MECHANICAL:
 - 2.1 CABLE RETENTION FORCE: RG174=9.7 lbs Min.
3. OTHERS:
 - 3.1 THIS COMPONENT AND ITS HOMOGENEOUS SUB COMPONENTS ARE RoHS COMPLIAN.



CODE	CODE REFERENCE CHART		CODE
A	Black 9005	Violet 4003	H
B	Cream white 9001	Beige 1001	I
C	Blue 5005	Curry 1027	K
D	Bordeaux 4004	Carmin red 3002	L
E	Green 6002	Pastel orange 2003	M
F	Brown 8011	Pastel green 6019	N
G	Grey 7031	Water blue 5021	Z

6	SHRING TUBE	PE	BLACK	1
5	FERRULE	BRASS	NICKEL	1
4	CONTACT	BE.COPPER	GOLD	1
3	IINSULATOR	PTFE	NATURAL	1
2	BODY	ZINC	NICKEL	1
1	HOUSING	PBT+15%GF	BY CODE COLOR	1
ITEMS	DESCRIPTION	MATERIAL	FINISHED	Q'TY



RECOMMENDED CABLE STRIPPING DIM'S

1	PROPOSAL RELEASED	---	Enid	Yang	2021/08/13
REV.	DESCRIPTION	ECN NO.	NAME	CHECK	DATE

REVISIONS

QUALITY SYMBOLS MAJOR Ⓢ CRITICAL Ⓢ	DRAWN BY Enid	DATE 21/08/13	
	CHECKED BY Yang	DATE 21/08/13	
GENERAL TOLERANCES (UNLESS SPECIFIED) X ±0.5 .X ±0.25 .XX ±0.15 .XXX ±0.1 ANGLES ±2°	UNITS mm		SIZE A4
	SCALE 3:1	SHEET NO. 1 OF 1	REV 1
			RFQ NO. -
			DWG NO. 12-92802-A1XX2-CA1