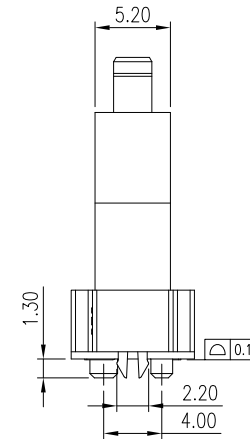
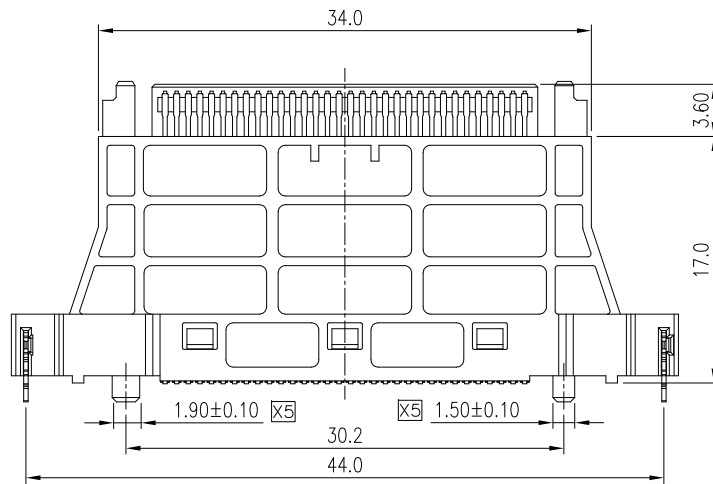
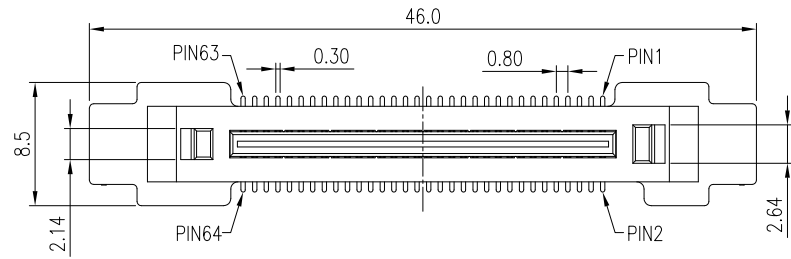


PROPRIETARY INFORMATION
COMPANY CONFIDENTIAL

REV.	ECN. NO.	DESCRIPTION	ENG	DATE
X1		INITIAL	AXL	2/17/2016
X2		ADD PACKAGING	DANIEL	8/2/2017
X3		EDITED NOTES 3	AXL	4/30/2018
X4		ADD SPEC	YIN	9/18/2018
X5		CHANGE THE TOLERANCE	Terry	6/8/2020
X6		ADD SPEC	Leo	3/22/2022

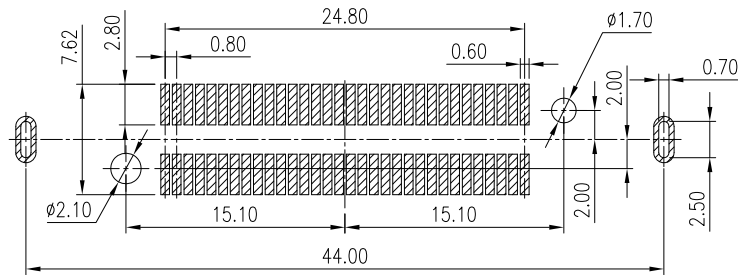


ⓧ6 ⓧ4 ⓧ2 PART. NUMBER

110-10007-XX

NOTES :

- MATERIAL
HOUSING: LCP, UL94V-0, BLACK
TERMINAL: BRASS
BOARDLOCK: BRASS
- PLATING:
TERMINAL:
CONTACT AREA: GOLD PLATING
SOLDER TAIL: 80u" TIN PLATING
UNDER PLATING: 80u" TIN PLATING 30u" NICKEL OVERALL
BOARDLOCK: 80u" TIN PLATING 30u" NICKEL OVERALL
- CURRENT RATING:
ⓧ3 a). FOR ALL PINS CONNECTED: 0.5A.
b). FOR 6 CONSECUTIVE PINS CONNECTED: 1.0A.
- DIELECTRIC WITHSTANDING VOLTAGE: 500VAC FOR 1 MINUTE.
- INSULATION RESISTANCE: 100Mohms min.
- 5Gbps min. COMPLIANT.
- DESIGN TO MATE WITH 110-10008.
- TRAY PACKAGING.



RECOMMENDED PCB LAYOUT
TOLERANCE: ±0.05mm

01: TRAY (HORIZONTAL PRODUCT PLACEMENT) CONTACT AREA: GOLD FLASH PLATING
02: TRAY (VERTICAL PRODUCT PLACEMENT) CONTACT AREA: GOLD FLASH PLATING
03: TRAY (HORIZONTAL PRODUCT PLACEMENT) CONTACT AREA: 30u" Au PLATING
04: TRAY (VERTICAL PRODUCT PLACEMENT) CONTACT AREA: 4u" Au PLATING

GENERAL TOLERANCE X ± 0.50 .X ± 0.40 .XX ± 0.30 .XXX ± 0.20	ANGLE TOLERANCE X° ± 5.0° .X° ± 3.0° .XX° ± 2.0° .XXX° ± 1.0°	DRAWN TERRY	DATE 8/2/17'	
MATERIAL SEE BOM		CHECKED	DATE	
FINISH SEE NOTES		APPROVED	DATE	PART NUMBER ⓧ2 110-10007-XX
SCALE N/A	UNIT mm	SHEET 1 OF 1		DRAWING NO. 110-10007
				SIZE A4
				REV. X6