

92804 Series Mini FAKRA Male Conn. T/H R/A Quad Type

■ Overview

Mini-FAKRA connector series are the latest in automotive interconnect technology for high data transmission. In view of the space-conscious and high-performance modular design, gives a larger application under the increasingly strict and precise requirements of the automotive industry. Reducing installation space requirements by up to 80% compared with traditional FAKRA products. High coding efficiency and color management prevent misuse of connectors and use more ergonomics.

■ Applications

- 360° Surround View Camera
- ECUs and Compute Modules
- Autonomous Vehicles
- Advanced Driver Assistance Systems (ADAS)
- GPS Navigation
- 3D Instrument Cluster
- High Bandwidth Infotainment
- Remote Start and Vehicle Controls
- V2X Communication

Mini Fakra 92804	
Item	Spec.
Power Current	≤ 1 A DC
Working Voltage	≤ 60 V DC
Insulation Resistance	$\geq 1 \times 10^3$ M Ω
Signal Contact Resistance	≤ 15 m Ω
Outer Contact Resistance	≤ 5 m Ω
Temperature Range	-40 to +105°C

■ Challenges

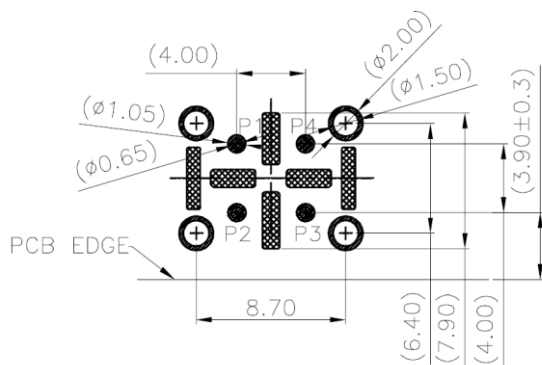
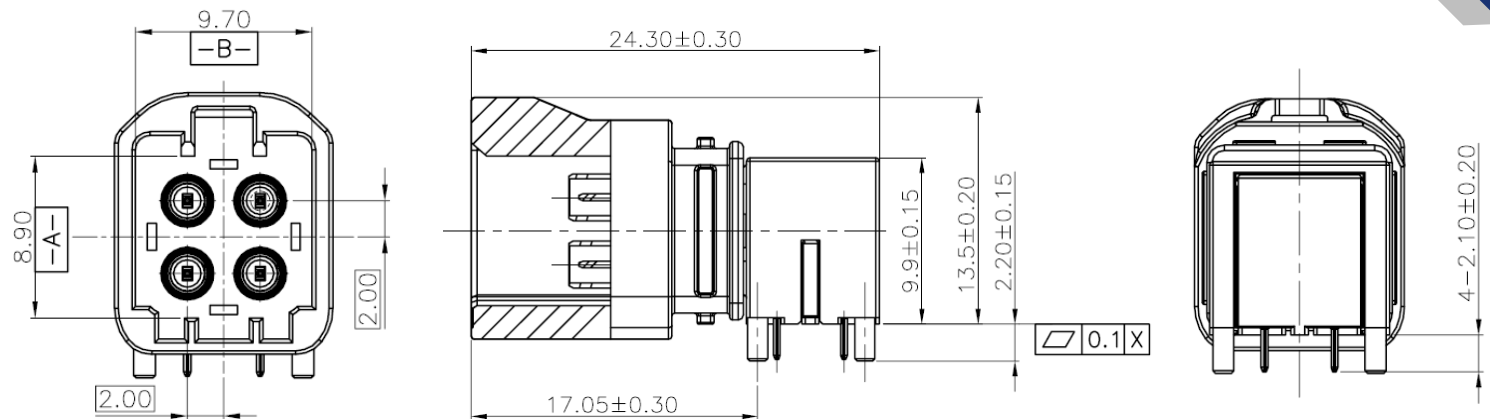
- Price advantage Save
- Modular space
- Can be customized according to customer needs
- Compliance with automotive specifications

■ Features and Benefits

- Impedance: 50 Ω
- Supports up to 9 GHz.
- Temperature range from -40 °C to +105 °C
- Mating cycles ≥ 25
- Electromagnetic compatibility (EMC)
- Different mechanical and colored coding



Basic Specification



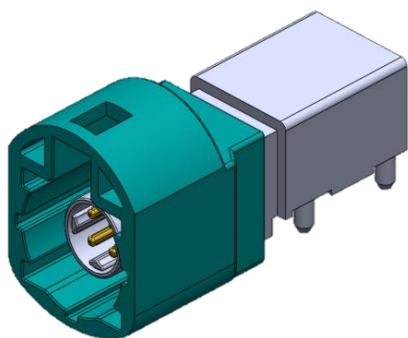
RECOMMENDED PCB LAYOUT
TOLERANCE±0.05
SOLDER AREA STAND OFF AREA

No.	DESCRIPTION	MATERIALS	Q'TY
1	HOUSING	PLASTIC	1
2	INSULATOR1	PLASTIC	2
3	INSULATOR2	PLASTIC	2
4	CENTER CONTACT 1	COPPER ALLOY	2
5	CENTER CONTACT 2	COPPER ALLOY	2
6	BODY	ZINC ALLOY	1
7	COVER	ZINC ALLOY	1

Coding

Coding	A KEY	B KEY	C KEY	D KEY	E KEY	F KEY	Z KEY	I KEY
Plug								
Color	Black	White	Blue	Bordeaux	Green	Brown	Waterblue	Waterblue
RAL	Sim. 9005	Sim. 9010	Sim. 5012	Sim. 4004	Sim. 6017	Sim. 8011	Sim. 5021	Sim. 5021





92805 Series HSD Male Conn. T/H R/A Single Type

■ Overview

HSD connector systems which deal with the high-speed data, also could prevent interference from crosstalk and external sources makes the system could perfectly applied in real-time automotive industry applications under robust and stable modular design. Compatible with LVDS, USB connections, Ethernet applications.

■ Applications

- Automotive electronics
- Telecom industries, e.g. radio base stations
- Digital infotainment electronics
- Digital symmetrical networks, e.g. LVDS cameras, USB connections, Ethernet (IEEE 802.3) and Firewire (IEEE 1394)

HSD 92805	
Item	Spec.
Power Current	$\leq 1.5\text{A DC}$
Working Voltage	100 V rms
Insulation Resistance	$\geq 1 \times 10^3 \text{M}\Omega$
Signal Contact Resistance	$\leq 10\text{m}\Omega$
Outer Contact Resistance	$\leq 7.5\text{m}\Omega$
Temperature Range	-40 to +105°C

■ Challenges

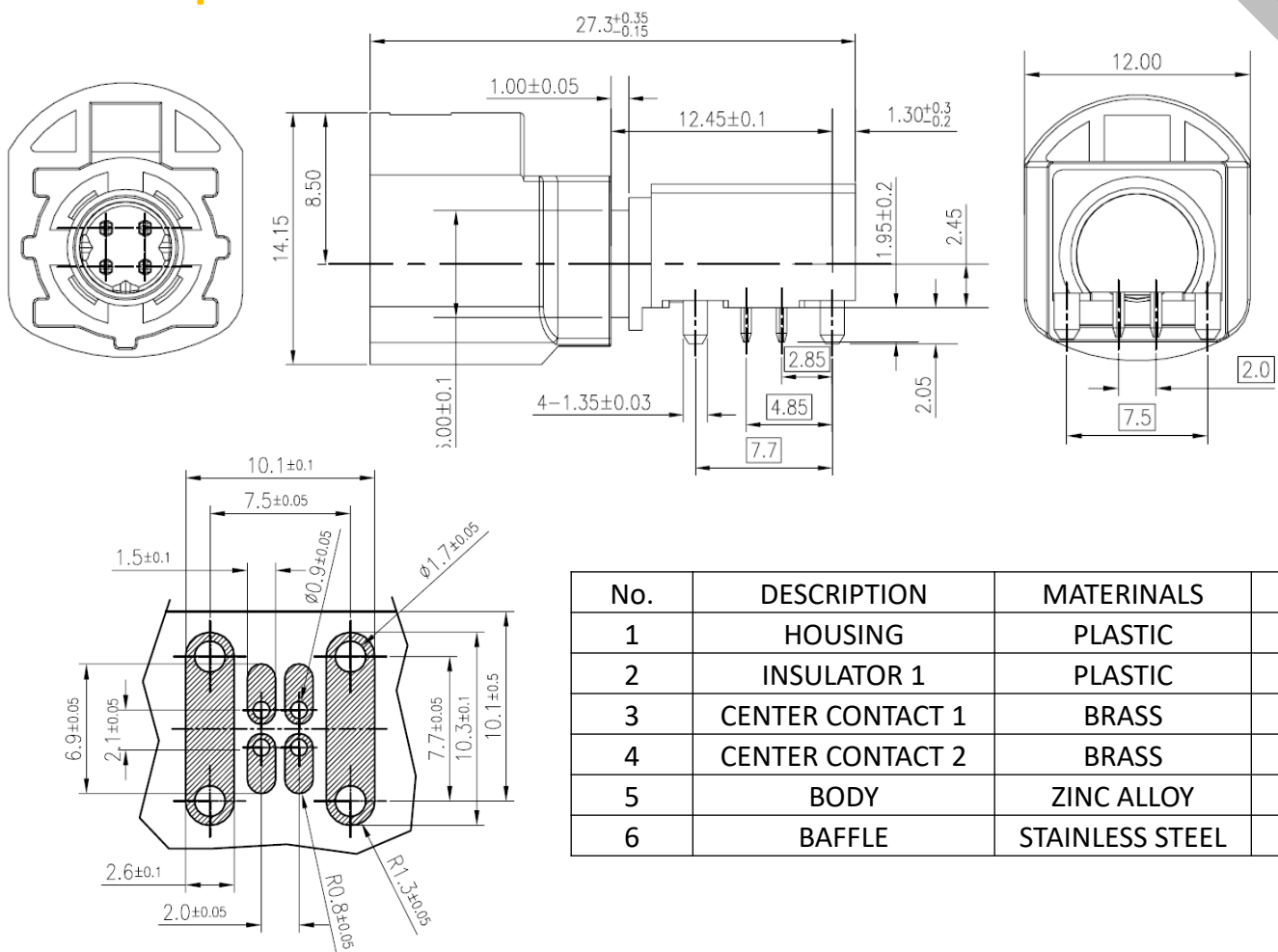
- Price advantage Save
- Modular space
- Can be customized according to customer needs
- Compliance with automotive specifications

■ Features & Benefits

- Impedance: 100 Ω
- Frequency range DC up to 2 GHz
- Temperature range from -40 °C to +105 °C
- Mating cycles ≥ 25
- Electromagnetic compatibility (EMC)
- Different mechanical and colored coding




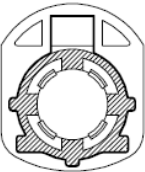

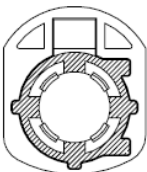
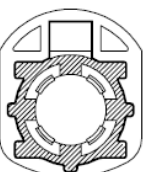




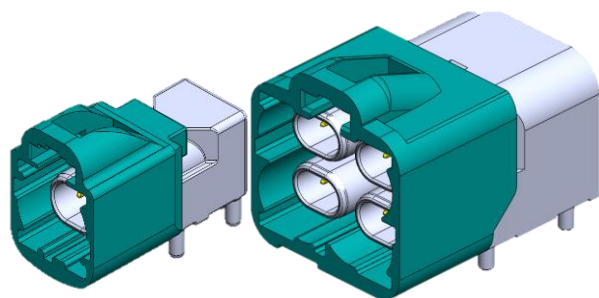
■ Basic Specification



PCB LAYOUT

No.	DESCRIPTION	MATERIALS	Q'TY
1	HOUSING	PLASTIC	1
2	INSULATOR 1	PLASTIC	1
3	CENTER CONTACT 1	BRASS	2
4	CENTER CONTACT 2	BRASS	2
5	BODY	ZINC ALLOY	1
6	BAFFLE	STAINLESS STEEL	1

Coding	A	B	C	D	E	F	Z
Plug							
Color	BLACK	WHITE	BLUE	BORDEAUX	GREEN	BROWN	WATER BLUE
RAL	sim.9005	sim.9010	sim.5005	sim.4004	sim.6002	sim.8011	sim.5021
Coding	H	J					
Plug							
Color	VIOLET	BEIGE					
RAL	sim.4003	sim.1001					



92806 Series H-MTD Male Conn. T/H R/A Single & Quad Type

■ Overview

H-MTD connector systems for high-speed data transmission extensively used in the automotive industry and flexibility to support a wide range of Ethernet. In view of the increasing demand for High resolution displays and Autonomous driving, this HMTD series of products has taken a pivotal position. The advantages of this product are High coding efficiency, small dimension design and also could be used with a variety of different cables.

■ Applications

- Driver assistance systems and autonomous driving
- Camera systems 4k and higher
- High-resolution displays 4K
- Rear seat entertainment

HMTD Single/Quad 92806	
Item	Spec.
Power Current	$\leq 1.5A$ DC
Working Voltage	≤ 60 V DC
Insulation Resistance	$\geq 100M\Omega$
Signal Contact Resistance	$\leq 10m\Omega$
Outer Contact Resistance	$\leq 7.5m\Omega$
Temperature Range	-40 to +105°C

■ Challenges

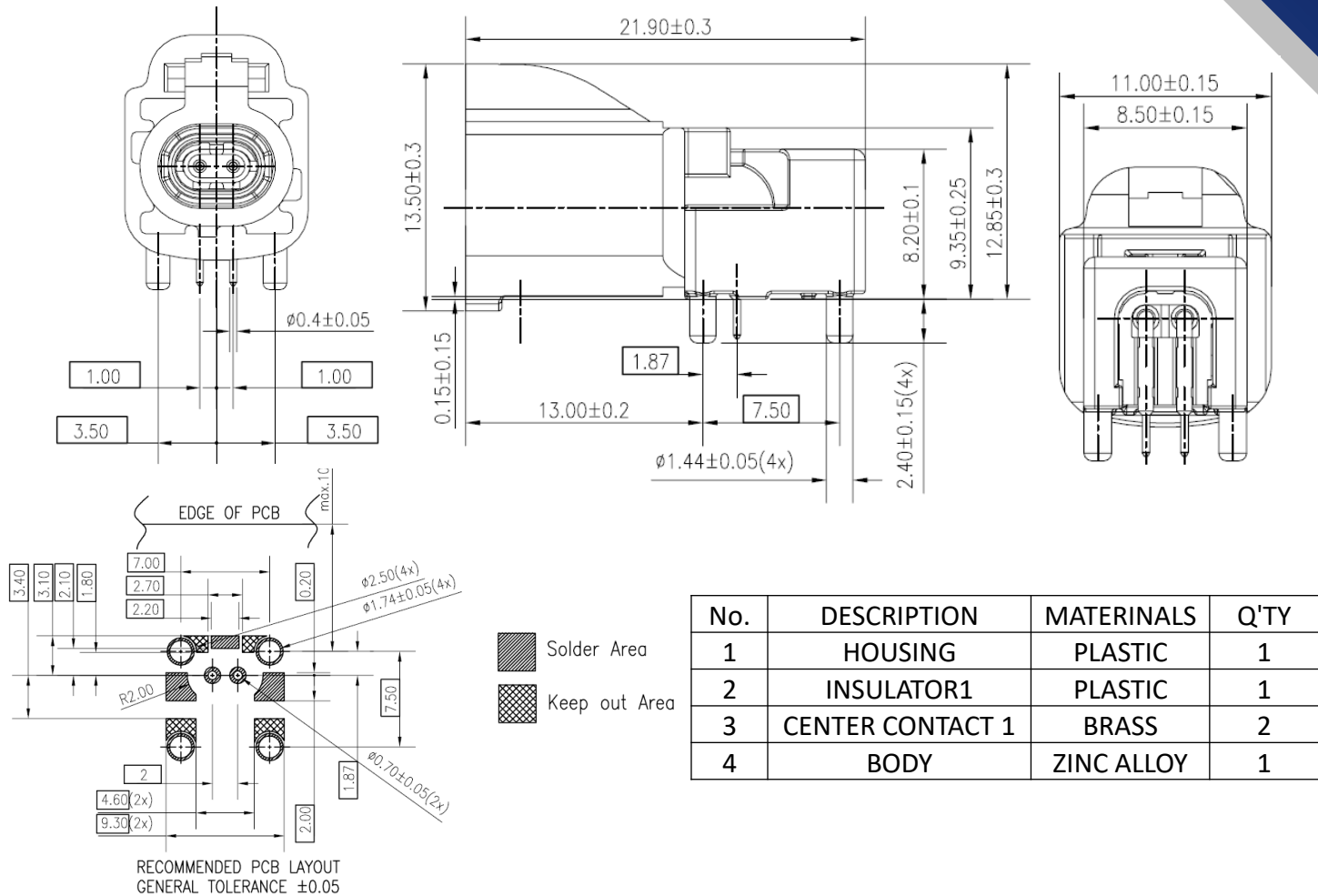
- Price advantage Save
- Modular space
- Can be customized according to customer needs
- Compliance with automotive specifications

■ Features & Benefits

- Impedance: 100 Ω
- Frequency range DC up to 2 GHz
- Mating cycles ≥ 25
- Single, quad, housings



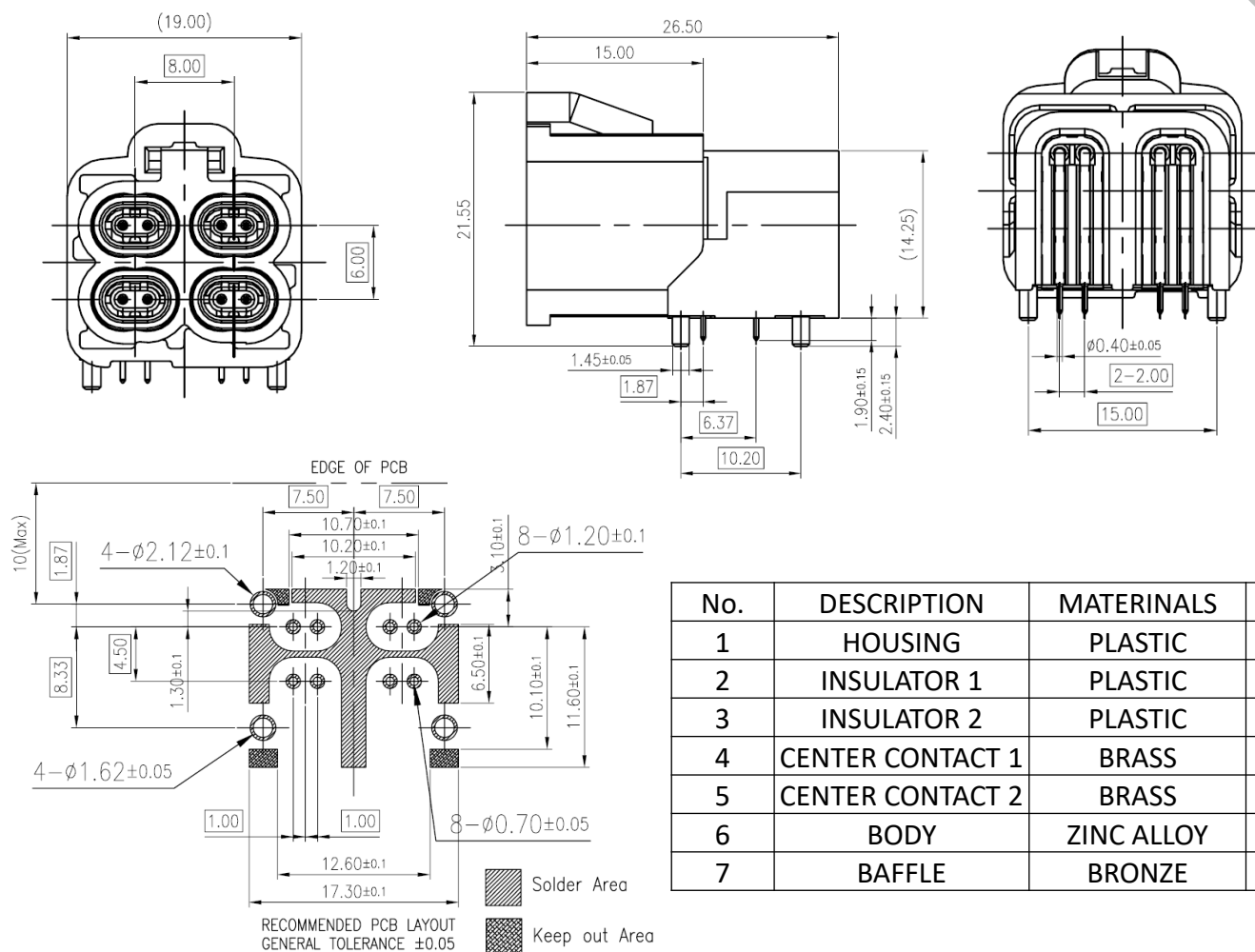
Basic Specification



Coding	A	B	C	D	E	F	Z
Plug							
Color	Jet Black	Pure White	Light Blue	Claret Violet	May Green	Nut Brown	Water Blue
RAL	sim.9005	sim.9010	sim.5012	sim.4004	sim.6017	sim.8011	sim.5021
Coding	G	H	J	K	L	M	O
Plug							
Color	Platinum Grey	Light Pink	Beige	Curry	Yellow Green	Pastel Orange	Light Green
RAL	sim.7036	sim.3015	sim.1001	sim.1027	sim.6018	sim.2003	sim.6027



Basic Specification



No.	DESCRIPTION	MATERIALS	Q'TY
1	HOUSING	PLASTIC	1
2	INSULATOR 1	PLASTIC	2
3	INSULATOR 2	PLASTIC	2
4	CENTER CONTACT 1	BRASS	2
5	CENTER CONTACT 2	BRASS	2
6	BODY	ZINC ALLOY	1
7	BAFFLE	BRONZE	1

CODING							
Coding	A KEY	B KEY	C KEY	D KEY	E KEY	F KEY	G KEY
Plug							
Color	Black	White	Blue	Bordeaux	Green	Brown	Grey
RAL	Sim. 9005	Sim. 9010	Sim. 5012	Sim. 4004	Sim. 6017	Sim. 8011	Sim. 7036
Coding	H KEY	J KEY	K KEY	L KEY	M KEY	O KEY	Z KEY
Plug							
Color	Violet	Beige	Curry	Carmin Red	Pastel Orange	Pastel Green	Waterblue
RAL	Sim. 3015	Sim. 1001	Sim. 1027	Sim. 6018	Sim. 2003	Sim. 6027	Sim. 5021

